

β-Amyloid Rabbit mAb

Catalog No.: A26342 **Recombinant**

Basic Information

Observed MW

Refer to figures

Calculated MW

87kDa

Category

Primary antibody

Applications

DB,IHC-P,IF/ICC,ELISA

Cross-Reactivity

Mouse

CloneNo number

ARC65652

Background

This gene encodes a cell surface receptor and transmembrane precursor protein that is cleaved by secretases to form a number of peptides. Some of these peptides are secreted and can bind to the acetyltransferase complex APBB1/TIP60 to promote transcriptional activation, while others form the protein basis of the amyloid plaques found in the brains of patients with Alzheimer disease. In addition, two of the peptides are antimicrobial peptides, having been shown to have bacteriocidal and antifungal activities. Mutations in this gene have been implicated in autosomal dominant Alzheimer disease and cerebroarterial amyloidosis (cerebral amyloid angiopathy). Multiple transcript variants encoding several different isoforms have been found for this gene.

Recommended Dilutions

DB	1:500 - 1:1000
IHC-P	1:50 - 1:200
IF/ICC	1:50 - 1:200
ELISA	Recommended starting concentration is 1 µg/mL. Please optimize the concentration based on your specific assay requirements.

Contact

	400-999-6126
	cn.market@abclonal.com.cn
	www.abclonal.com.cn

Immunogen Information

Gene ID

351

Swiss Prot

P05067

Immunogen

A synthetic peptide corresponding to a sequence within amino acids 591-690 of human β-Amyloid (NP_000475.1).

Synonyms

AAA; AD1; PN2; ABPP; APPI; CVAP; ABETA; PN-II; preA4; CTFgamma; alpha-sAPP

Product Information

Source

Rabbit

Isotype

IgG

Purification

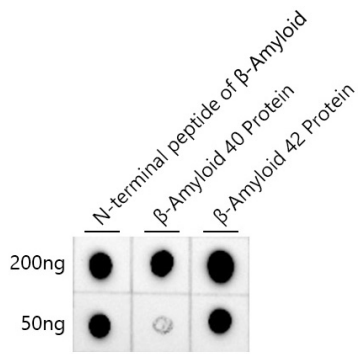
Affinity purification

Storage

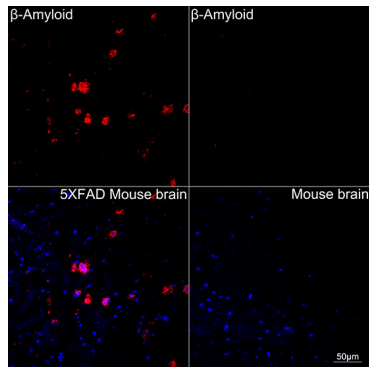
Store at -20°C. Avoid freeze / thaw cycles.

Buffer: PBS with 0.05% proclin300,0.05% BSA,50% glycerol,pH7.3.

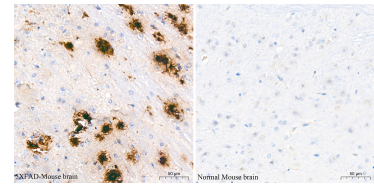
Validation Data



Dot-blot analysis of N-terminal peptide of β -Amyloid, β -Amyloid 40 proteins, β -Amyloid 42 proteins using β -Amyloid Rabbit mAb (A26342) at 1:1000 dilution.



Confocal imaging of paraffin-embedded 5XFAD Mouse brain and Mouse brain tissue using β -Amyloid Rabbit mAb (A26342, dilution 1:200) followed by a further incubation with Cy3 Goat Anti-Rabbit IgG (H+L) (AS007, dilution 1:500) (Red). DAPI was used for nuclear staining (Blue). Microwave antigen retrieval performed with 0.01M Citrate Buffer (pH 6.0) prior to IF staining. Objective: 40x.



Immunohistochemistry analysis of paraffin-embedded (5XFAD) Mouse brain and Mouse brain tissue using β -Amyloid Rabbit mAb (A26342) at a dilution of 1:800 (40x lens). High pressure antigen retrieval performed with 0.01M Citrate Buffer (pH 6.0) prior to IHC staining.