

ABflo® 700 Rabbit anti-Human/Mouse CD276/B7-H3 mAb

Catalog No.: A26358

Basic Information

Observed MW

Refer to figures

Calculated MW

33kDa/52kDa/57kDa

Category

Primary antibody

Applications

FC

Cross-Reactivity

Human, Mouse

CloneNo number

ARC54779-ABflo700

Conjugate

ABflo® 700. Ex:690nm. Em:713nm.

Recommended Dilutions

FC 5 µl per 10⁶ cells in
100 µl volume

Background

The protein encoded by this gene belongs to the immunoglobulin superfamily, and thought to participate in the regulation of T-cell-mediated immune response. Studies show that while the transcript of this gene is ubiquitously expressed in normal tissues and solid tumors, the protein is preferentially expressed only in tumor tissues. Additionally, it was observed that the 3' UTR of this transcript contains a target site for miR29 microRNA, and there is an inverse correlation between the expression of this protein and miR29 levels, suggesting regulation of expression of this gene product by miR29. Alternatively spliced transcript variants encoding different isoforms have been found for this gene.

Immunogen Information

Gene ID
80381

Swiss Prot
Q5ZPR3-2

Immunogen

Recombinant fusion protein containing a sequence corresponding to amino acids 29-245 of human CD276/B7-H3 (NP_079516.1).

Synonyms

CD276; 4lg-B7-H3; B7-H3; B7H3; B7RP-2; CD276 antigen

Contact

 | 400-999-6126

 | cn.market@abclonal.com.cn

 | www.abclonal.com.cn

Product Information

Source
Rabbit

Isotype
IgG

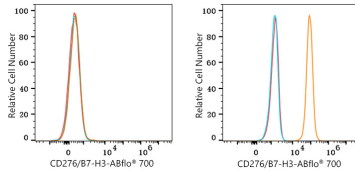
Purification
Affinity purification

Storage

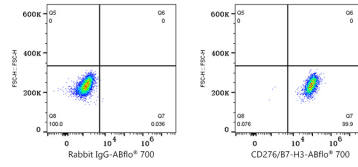
Store at 2-8°C. Avoid freeze.

Buffer: PBS with 0.09% Sodium azide, 0.2% BSA, pH7.3.

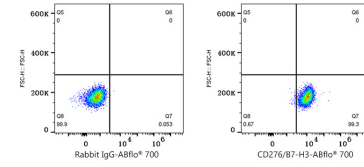
Validation Data



Flow cytometry: 1×10^6 Jurkat cells (negative control, left) and PC-3 cells (right) were surface-stained with ABflo® 700 Rabbit anti-Human/Mouse CD276/B7-H3 mAb (A26358, 5 μ l/Test, orange line) or ABflo® 700 Rabbit IgG isotype control (5 μ l/Test, blue line). Non-fluorescently stained cells were used as blank control (red line).



Flow cytometry: 1×10^6 PC-3 cells were surface-stained with ABflo® 700 Rabbit IgG isotype control (5 μ l/Test, left) or ABflo® 700 Rabbit anti-Human/Mouse CD276/B7-H3 mAb (A26358, 5 μ l/Test, right).



Flow cytometry: 1×10^6 C2C12 cells were surface-stained with ABflo® 700 Rabbit IgG isotype control (5 μ l/Test, left) or ABflo® 700 Rabbit anti-Human/Mouse CD276/B7-H3 mAb (A26358, 5 μ l/Test, right).