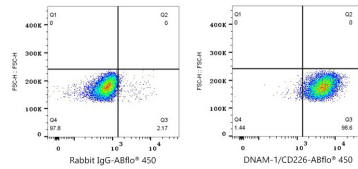
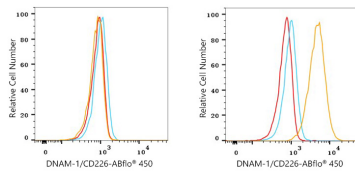


Validation Data



Flow cytometry: 1×10^6 293F cells (negative control, left) and HEL cells (right) were surface-stained with ABflo® 450 Rabbit anti-Human CD226/DNAM-1 mAb (A26359, 5 μ l/Test, orange line) or ABflo® 450 Rabbit IgG isotype control (5 μ l/Test, blue line). Non-fluorescently stained cells were used as blank control (red line).

Flow cytometry: 1×10^6 HEL cells were surface-stained with ABflo® 450 Rabbit IgG isotype control (5 μ l/Test, left) or ABflo® 450 Rabbit anti-Human CD226/DNAM-1 mAb (A26359, 5 μ l/Test, right).