

ABflo® 700 Rabbit anti-Human CD97 mAb

Catalog No.: A26362

Basic Information

Observed MW

Refer to figures

Calculated MW

81kDa/86kDa/92kDa

Category

Primary antibody

Applications

FC

Cross-Reactivity

Human

CloneNo number

ARC55825

Conjugate

ABflo® 700. Ex:690nm. Em:713nm.

Recommended Dilutions

FC 5 µl per 10⁶ cells in
100 µl volume

Background

This gene encodes a member of the EGF-TM7 subfamily of adhesion G protein-coupled receptors, which mediate cell-cell interactions. These proteins are cleaved by self-catalytic proteolysis into a large extracellular subunit and seven-span transmembrane subunit, which associate at the cell surface as a receptor complex. The encoded protein may play a role in cell adhesion as well as leukocyte recruitment, activation and migration, and contains multiple extracellular EGF-like repeats which mediate binding to chondroitin sulfate and the cell surface complement regulatory protein CD55. Expression of this gene may play a role in the progression of several types of cancer. Alternatively spliced transcript variants encoding multiple isoforms with 3 to 5 EGF-like repeats have been observed for this gene. This gene is found in a cluster with other EGF-TM7 genes on the short arm of chromosome 19.

Immunogen Information

Gene ID

976

Swiss Prot

P48960

Immunogen

Recombinant protein (or fragment). This information is considered to be commercially sensitive.

Synonyms

CD97; TM7LN1

Contact

☎ | 400-999-6126

✉ | cn.market@abclonal.com.cn

🌐 | www.abclonal.com.cn

Product Information

Source

Rabbit

Isotype

IgG

Purification

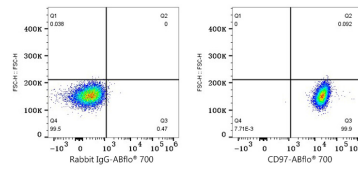
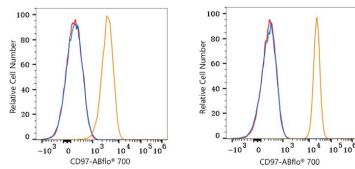
Affinity purification

Storage

Store at 2-8°C. Avoid freeze.

Buffer: PBS with 0.09% Sodium azide, 0.2% BSA, pH7.3.

Validation Data



Flow cytometry: 1×10^6 MOLT-4 cells (Low Expression, left) and U-937 cells (right) were surface-stained with ABflo® 700 Rabbit anti-Human CD97 mAb (A26362, 5 μ l/Test, orange line) or ABflo® 700 Rabbit IgG isotype control (A25976, 5 μ l/Test, blue line). Non-fluorescently stained cells were used as blank control (red line).

Flow cytometry: 1×10^6 U-937 cells were surface-stained with ABflo® 700 Rabbit IgG isotype control (A25976, 5 μ l/Test, left) or ABflo® 700 Rabbit anti-Human CD97 mAb (A26362, 5 μ l/Test, right).