

# ABflo® 700 Rabbit anti-Human CD150/SLAM mAb

Catalog No.: A26364

## Basic Information

### Observed MW

Refer to figures

### Calculated MW

37kDa

### Category

Primary antibody

### Applications

FC

### Cross-Reactivity

Human

### CloneNo number

ARC56096

### Conjugate

ABflo® 700. Ex:690nm. Em:713nm.

## Recommended Dilutions

**FC** 5 µl per 10<sup>6</sup> cells in  
100 µl volume

## Background

Enables SH2 domain binding activity and identical protein binding activity. Involved in several processes, including negative regulation of CD40 signaling pathway; negative regulation of cytokine production; and positive regulation of MAPK cascade. Located in extracellular exosome.

## Immunogen Information

### Gene ID

6504

### Swiss Prot

Q13291

### Immunogen

Recombinant protein (or fragment). This information is considered to be commercially sensitive.

### Synonyms

SLAM; CD150; CDw150

## Contact

 | 400-999-6126

 | [cn.market@abclonal.com.cn](mailto:cn.market@abclonal.com.cn)

 | [www.abclonal.com.cn](http://www.abclonal.com.cn)

## Product Information

### Source

Rabbit

### Isotype

IgG

### Purification

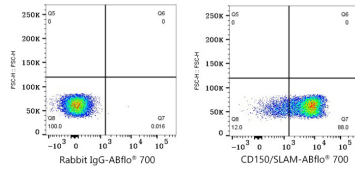
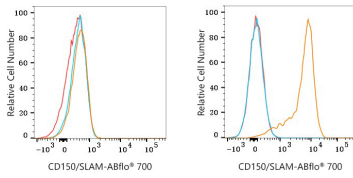
Affinity purification

### Storage

Store at 2-8°C. Avoid freeze.

Buffer: PBS with 0.09% Sodium azide, 0.2% BSA, pH7.3.

## Validation Data



Flow cytometry:  $1 \times 10^6$  293T cells (negative control, left) and Human PBMC (right) were surface-stained with ABflo® 700 Rabbit anti-Human CD150/SLAM mAb (A26364, 5  $\mu$ l/Test, orange line) or ABflo® 700 Rabbit IgG isotype control (A25976, 5  $\mu$ l/Test, blue line). Non-fluorescently stained cells were used as blank control (red line).

Flow cytometry:  $1 \times 10^6$  Human PBMC were surface-stained with ABflo® 700 Rabbit IgG isotype control (A25976, 5  $\mu$ l/Test, left) or ABflo® 700 Rabbit anti-Human CD150/SLAM mAb (A26364, 5  $\mu$ l/Test, right).