

ABflo® 700 Rabbit anti-Human CD144/VE Cadherin mAb

Catalog No.: A26373

Basic Information

Observed MW

Calculated MW
88kDa

Category
Primary antibody

Applications
FC

Cross-Reactivity
Human

CloneNo number
ARC58061-ABflo700

Conjugate
ABflo® 700. Ex:690nm. Em:713nm.

Recommended Dilutions

FC 5 µl per 10⁶ cells in
100 µl volume

Contact

 | 400-999-6126

 | cn.market@abclonal.com.cn

 | www.abclonal.com.cn

Background

This gene encodes a classical cadherin of the cadherin superfamily. The encoded preproprotein is proteolytically processed to generate the mature glycoprotein. This calcium-dependent cell-cell adhesion molecule is comprised of five extracellular cadherin repeats, a transmembrane region and a highly conserved cytoplasmic tail. Functioning as a classical cadherin by imparting to cells the ability to adhere in a homophilic manner, this protein plays a role in endothelial adherens junction assembly and maintenance. This gene is located in a gene cluster in a region on the long arm of chromosome 16 that is involved in loss of heterozygosity events in breast and prostate cancer.

Immunogen Information

Gene ID	Swiss Prot
1003	P33151

Immunogen

Recombinant fusion protein containing a sequence corresponding to amino acids 48-593 of human CD144/VE Cadherin(NP_001786.2)

Synonyms

7B4; CD144

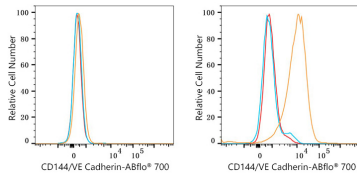
Product Information

Source	Isotype	Purification
Rabbit	IgG	Affinity purification

Storage

Store at 2-8°C. Avoid freeze.
Buffer: PBS with 0.09% Sodium azide,0.2% BSA,pH7.3.

Validation Data



Flow cytometry: 1×10^6 HeLa cells (negative control, left) and BeWo cells (right) were surface-stained with ABflo® 700 Rabbit anti-Human CD144/VE Cadherin mAb (A26373, 5 µl/Test, orange line) or ABflo® 700 Rabbit IgG isotype control (5 µl/Test, blue line). Non-fluorescently stained cells were used as blank control (red line).