

PE Rabbit anti-Human C5AR1/CD88 mAb

Catalog No.: A26387

Basic Information

Observed MW

Calculated MW

39kDa

Category

Primary antibody

Applications

FC

Cross-Reactivity

Human

CloneNo number

ARC68667-PE

Conjugate

PE. Ex:565nm. Em:574nm.

Background

Enables G protein-coupled receptor activity and complement component C5a receptor activity. Involved in several processes, including complement component C5a signaling pathway; mRNA transcription by RNA polymerase II; and positive regulation of ERK1 and ERK2 cascade. Located in apical part of cell and basolateral plasma membrane. Biomarker of Alzheimer's disease; asthma; chronic obstructive pulmonary disease; rhinitis; and severe acute respiratory syndrome.

Recommended Dilutions

FC 5 μ l per 10^6 cells in
100 μ l volume

Immunogen Information

Gene ID

728

Swiss Prot

P21730

Immunogen

A synthetic peptide corresponding to a sequence within amino acids 1-100 of human C5AR1/CD88 (NP_001727.2).

Synonyms

C5A; C5AR; C5R1; CD88

Contact

 | 400-999-6126

 | cn.market@abclonal.com.cn

 | www.abclonal.com.cn

Product Information

Source

Rabbit

Isotype

IgG

Purification

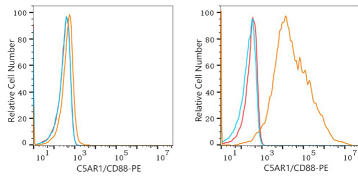
Affinity purification

Storage

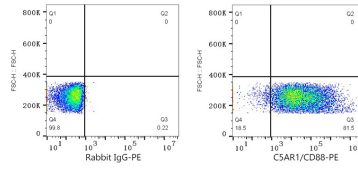
Store at 2-8°C. Avoid freeze.

Buffer: PBS with 0.09% Sodium azide, 0.2% BSA, pH7.3.

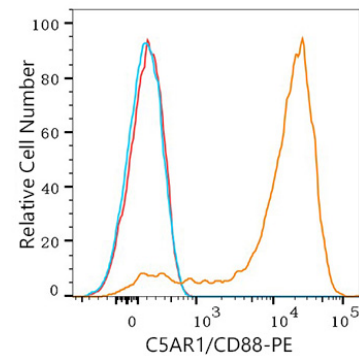
Validation Data



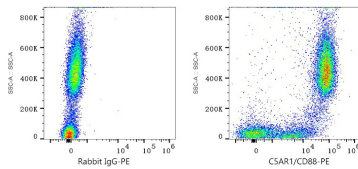
Flow cytometry: 1×10^6 293T cells (negative control, left) and 293T (Transfection, right) cells were surface-stained with PE Rabbit anti-Human C5AR1/CD88 mAb (A26387,5 μ l/Test, orange line) or PE Rabbit IgG isotype control (A24172,5 μ l/Test, blue line). Non-fluorescently stained cells were used as blank control (red line).



Flow cytometry: 1×10^6 293T (Transfection) cells were surface-stained with PE Rabbit IgG isotype control (A24172,5 μ l/Test, left) or PE Rabbit anti-Human C5AR1/CD88 mAb (A26387,5 μ l/Test, right).



Flow cytometry: 1×10^6 Human PBMC were surface-stained with PE Rabbit anti-Human C5AR1/CD88 mAb (A26387,5 μ l/Test, orange line) or PE Rabbit IgG isotype control (A24172,5 μ l/Test, blue line). Non-fluorescently stained cells were used as blank control (red line).



Flow cytometry: 1×10^6 Human peripheral blood cells were surface-stained with PE Rabbit IgG isotype control (A24172,5 μ l/Test, left) or PE Rabbit anti-Human C5AR1/CD88 mAb (A26387,5 μ l/Test, right).