

# PE Rabbit anti-Human CD300 a/c mAb

Catalog No.: A26388

## Basic Information

### Observed MW

### Calculated MW

33kDa

### Category

Primary antibody

### Applications

FC

### Cross-Reactivity

Human

### CloneNo number

ARC67449

### Conjugate

PE. Ex:565nm. Em:574nm.

## Background

This gene encodes a member of the CD300 glycoprotein family of cell surface proteins found on leukocytes involved in immune response signaling pathways. This gene is located on chromosome 17 in a cluster with all but one of the other family members. Multiple transcript variants encoding different isoforms have been found for this gene.

## Recommended Dilutions

FC 5  $\mu$ l per  $10^6$  cells in  
100  $\mu$ l volume

## Immunogen Information

### Gene ID

11314/10871

### Swiss Prot

Q9UGN4/Q08708

### Immunogen

Recombinant protein (or fragment). This information is considered to be commercially sensitive.

### Synonyms

IRC1; IRC2; CLM-8; IRp60; IGSF12; CMRF35H; CMRF-35H; CMRF35-H; CMRF35H9; CMRF35-H9; IRC1/IRC2; CMRF-35-H9

## Contact

☎ | 400-999-6126

✉ | [cn.market@abclonal.com.cn](mailto:cn.market@abclonal.com.cn)

🌐 | [www.abclonal.com.cn](http://www.abclonal.com.cn)

## Product Information

### Source

Rabbit

### Isotype

IgG

### Purification

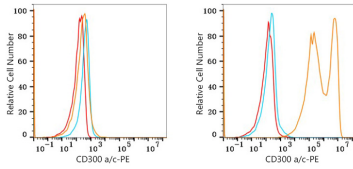
Affinity purification

### Storage

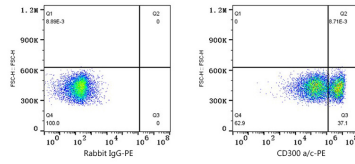
Store at 2-8°C. Avoid freeze.

Buffer: PBS with 0.09% Sodium azide, 0.2% BSA, pH7.3.

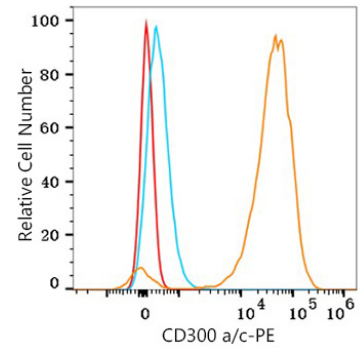
## Validation Data



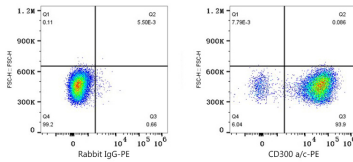
Flow cytometry:  $1 \times 10^6$  293F cells (negative control, left) and 293F (Transfection, right) cells were surface-stained with PE Rabbit anti-Human CD300 a/c mAb (A26388, 5  $\mu$ l/Test, orange line) or PE Rabbit IgG isotype control (A24172, 5  $\mu$ l/Test, blue line). Non-fluorescently stained cells were used as blank control (red line).



Flow cytometry:  $1 \times 10^6$  293F (Transfection) cells were surface-stained with PE Rabbit IgG isotype control (A24172, 5  $\mu$ l/Test, left) or PE Rabbit anti-Human CD300 a/c mAb (A26388, 5  $\mu$ l/Test, right).



Flow cytometry:  $1 \times 10^6$  RPMI 8226 cells were surface-stained with PE Rabbit anti-Human CD300 a/c mAb (A26388, 5  $\mu$ l/Test, orange line) or PE Rabbit IgG isotype control (A24172, 5  $\mu$ l/Test, blue line). Non-fluorescently stained cells were used as blank control (red line).



Flow cytometry:  $1 \times 10^6$  RPMI 8226 cells were surface-stained with PE Rabbit IgG isotype control (A24172, 5  $\mu$ l/Test, left) or PE Rabbit anti-Human CD300 a/c mAb (A26388, 5  $\mu$ l/Test, right).