

APC Rabbit anti-Human Integrin- β 1/CD29 mAb

Catalog No.: A26391

Basic Information

Observed MW

Refer to figures

Calculated MW

87kDa/88kDa/91kDa

Category

Primary antibody

Applications

FC

Cross-Reactivity

Human

CloneNo number

ARC52470

Conjugate

APC. Ex:650nm. Em:660nm.

Recommended Dilutions

FC 5 μ l per 10^6 cells in
100 μ l volume

Background

Integrins are heterodimeric proteins made up of alpha and beta subunits. At least 18 alpha and 8 beta subunits have been described in mammals. Integrin family members are membrane receptors involved in cell adhesion and recognition in a variety of processes including embryogenesis, hemostasis, tissue repair, immune response and metastatic diffusion of tumor cells. This gene encodes a beta subunit. Multiple alternatively spliced transcript variants which encode different protein isoforms have been found for this gene.

Immunogen Information

Gene ID

3688

Swiss Prot

P05556

Immunogen

Recombinant protein (or fragment). This information is considered to be commercially sensitive.

Synonyms

CD29; FNRB; MDF2; VLAB; GPIIA; MSK12; VLA-BETA

Contact

 | 400-999-6126

 | cn.market@abclonal.com.cn

 | www.abclonal.com.cn

Product Information

Source

Rabbit

Isotype

IgG

Purification

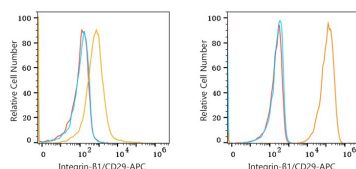
Affinity purification

Storage

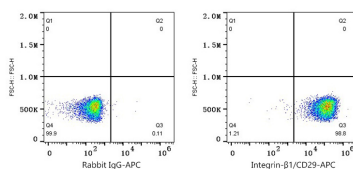
Store at 2-8°C. Avoid freeze.

Buffer: PBS with 0.09% Sodium azide, 0.2% BSA, pH7.3.

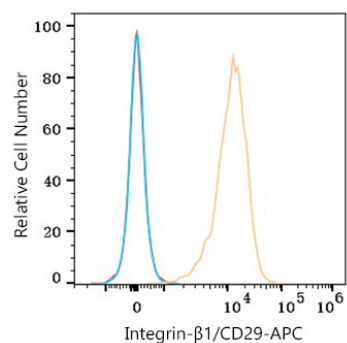
Validation Data



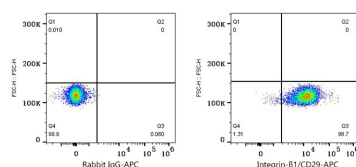
Flow cytometry: 1×10^6 RPMI-8226 cells (Low Expression, left) and A549 cells (right) were surface-stained with APC Rabbit anti-Human Integrin- $\beta 1$ /CD29 mAb (A26391, 5 μ l/Test, orange line) or APC Rabbit IgG isotype control (A24173, 5 μ l/Test, blue line). Non-fluorescently stained cells were used as blank control (red line).



Flow cytometry: 1×10^6 A549 cells were surface-stained with APC Rabbit IgG isotype control (A24173, 5 μ l/Test, left) or APC Rabbit anti-Human Integrin- $\beta 1$ /CD29 mAb (A26391, 5 μ l/Test, right).



Flow cytometry: 1×10^6 Human PBMC were surface-stained with APC Rabbit anti-Human Integrin- $\beta 1$ /CD29 mAb (A26391, 5 μ l/Test, orange line) or APC Rabbit IgG isotype control (A24173, 5 μ l/Test, blue line). Non-fluorescently stained cells were used as blank control (red line).



Flow cytometry: 1×10^6 Human PBMC were surface-stained with APC Rabbit IgG isotype control (A24173, 5 μ l/Test, left) or APC Rabbit anti-Human Integrin- $\beta 1$ /CD29 mAb (A26391, 5 μ l/Test, right).