

PE Rabbit anti-Mouse CD38 mAb

Catalog No.: A26393

Basic Information

Observed MW

Refer to figures

Calculated MW

34kDa

Category

Primary antibody

Applications

FC

Cross-Reactivity

Mouse

CloneNo number

ARC59835

Conjugate

PE. Ex:565nm. Em:574nm.

Recommended Dilutions

FC 5 μ l per 10^6 cells in
100 μ l volume

Background

This gene encodes a non-lineage-restricted, type II transmembrane glycoprotein that synthesizes and hydrolyzes cyclic adenosine 5'-diphosphate-ribose, an intracellular calcium ion mobilizing messenger. The release of soluble protein and the ability of membrane-bound protein to become internalized indicate both extracellular and intracellular functions for the protein. This protein has an N-terminal cytoplasmic tail, a single membrane-spanning domain, and a C-terminal extracellular region with four N-glycosylation sites. Knockout mice deficient for this gene display altered humoral immune responses. In addition, knockout mice exhibit higher locomotor activity and defects in nurturing and social behaviors.

Immunogen Information

Gene ID

12494

Swiss Prot

P56528

Immunogen

Recombinant protein (or fragment). This information is considered to be commercially sensitive.

Synonyms

I-19; ADPRC 1; Cd38-rs1

Contact

 | 400-999-6126

 | cn.market@abclonal.com.cn

 | www.abclonal.com.cn

Product Information

Source

Rabbit

Isotype

IgG

Purification

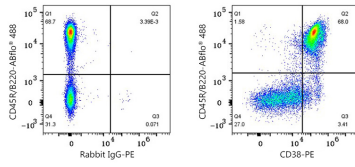
Affinity purification

Storage

Store at 2-8°C. Avoid freeze.

Buffer: PBS with 0.09% Sodium azide, 0.2% BSA, pH7.3.

Validation Data



Flow cytometry: 1×10^6 C57BL/6 mouse splenocytes were surface-stained with ABflo® 488 Rat anti-Mouse CD45R/B220 mAb (A27571,5 μ l/Test) and PE Rabbit IgG isotype control (A24172,5 μ l/Test,left) or PE Rabbit anti-Mouse CD38 mAb (A26393,5 μ l/Test,right).