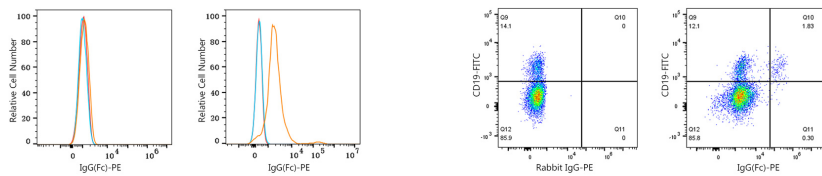


Validation Data



Flow cytometry: 1×10^6 293F cells (negative control, left) and Human PBMC (right) were intracellularly-stained with PE Rabbit anti-Human IgG (Fc) mAb (A26394, 5 μ l/Test, orange line) or PE Rabbit IgG isotype control (A24172, 5 μ l/Test, blue line). Non-fluorescently stained cells were used as blank control (red line).

Flow cytometry: 1×10^6 Human PBMC were intracellularly-stained with FITC Mouse anti-Human CD19 mAb (A22815, 5 μ l/Test) and PE Rabbit IgG isotype control (A24172, 5 μ l/Test, left) or PE Rabbit anti-Human IgG (Fc) mAb (A26394, 5 μ l/Test, right).