

PE Rabbit anti-Human CD90/Thy1 mAb

Catalog No.: A26398

Basic Information

Observed MW

Refer to figures

Calculated MW

18kDa

Category

Primary antibody

Applications

FC

Cross-Reactivity

Human

CloneNo number

ARC55641-PE

Conjugate

PE. Ex:565nm. Em:574nm.

Recommended Dilutions

FC 5 μ l per 10^6 cells in
100 μ l volume

Background

This gene encodes a cell surface glycoprotein and member of the immunoglobulin superfamily of proteins. The encoded protein is involved in cell adhesion and cell communication in numerous cell types, but particularly in cells of the immune and nervous systems. The encoded protein is widely used as a marker for hematopoietic stem cells. This gene may function as a tumor suppressor in nasopharyngeal carcinoma. Alternative splicing results in multiple transcript variants.

Immunogen Information

Gene ID

7070

Swiss Prot

P04216

Immunogen

Recombinant fusion protein containing a sequence corresponding to amino acids 20-130 of human CD90/Thy1 (NP_006279.2).

Synonyms

CD90; CDw90

Contact

 | 400-999-6126

 | cn.market@abclonal.com.cn

 | www.abclonal.com.cn

Product Information

Source

Rabbit

Isotype

IgG

Purification

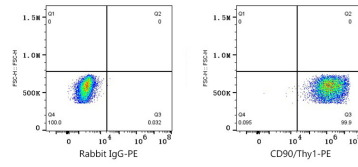
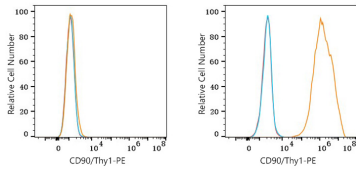
Affinity purification

Storage

Store at 2-8°C. Avoid freeze.

Buffer: PBS with 0.09% Sodium azide, 0.2% BSA, pH7.3.

Validation Data



Flow cytometry: 1×10^6 K-562 cells (negative control, left) and U-251 MG cells (right) were surface-stained with PE Rabbit anti-Human CD90/Thy1 mAb (A26398, 5 $\mu\text{l}/\text{Test}$, orange line) or PE Rabbit IgG isotype control (A24172, 5 $\mu\text{l}/\text{Test}$, blue line). Non-fluorescently stained cells were used as blank control (red line).

Flow cytometry: 1×10^6 U-251 MG cells were surface-stained with PE Rabbit IgG isotype control (A24172, 5 $\mu\text{l}/\text{Test}$, left) or PE Rabbit anti-Human CD90/Thy1 mAb (A26398, 5 $\mu\text{l}/\text{Test}$, right).