

# ABflo® 647 Rabbit anti-Mouse IL-33R/ST2 mAb

Catalog No.: A26401

## Basic Information

### Observed MW

Refer to figures

### Calculated MW

38kDa/65kDa

### Category

Primary antibody

### Applications

FC

### Cross-Reactivity

Mouse

### CloneNo number

ARC67060

### Conjugate

ABflo® 647. Ex:648nm. Em:664nm.

## Recommended Dilutions

FC 5 µl per 10<sup>6</sup> cells in  
100 µl volume

## Background

Enables interleukin-33 binding activity and interleukin-33 receptor activity. Involved in several processes, including negative regulation of T-helper 1 type immune response; positive regulation of macrophage activation; and regulation of cytokine production. Acts upstream of or within negative regulation of I-kappaB kinase/NF-kappaB signaling. Located in external side of plasma membrane and extracellular matrix. Is expressed in several structures, including immune system; musculoskeletal system; salivary gland; skin; and visual system. Human ortholog(s) of this gene implicated in asthma and coronary artery disease. Orthologous to human IL1RL1 (interleukin 1 receptor like 1).

## Immunogen Information

### Gene ID

17082

### Swiss Prot

P14719

### Immunogen

Recombinant protein (or fragment). This information is considered to be commercially sensitive.

### Synonyms

T1; St2; DER4; Ly84; ST2L; Fit-1; T1/ST2; St2-rs1

## Contact

☎ | 400-999-6126

✉ | [cn.market@abclonal.com.cn](mailto:cn.market@abclonal.com.cn)

🌐 | [www.abclonal.com.cn](http://www.abclonal.com.cn)

## Product Information

### Source

Rabbit

### Isotype

IgG

### Purification

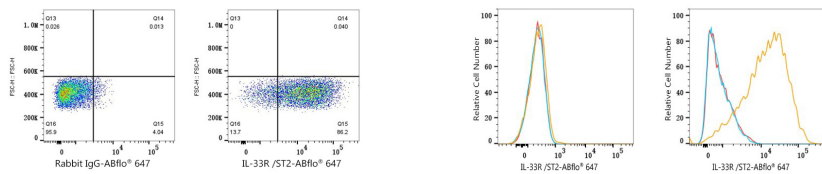
Affinity purification

### Storage

Store at 2-8°C. Avoid freeze.

Buffer: PBS containing 0.2% BSA, preserved with proclin300 or sodium azide (as specified on the Certificate of Analysis), pH 7.3.

## Validation Data



Flow cytometry:  $1 \times 10^6$  P815 cells were surface-stained with ABflo® 647 Rabbit IgG isotype control (A22070,5  $\mu\text{l}/\text{Test}$ ,left) or ABflo® 647 Rabbit anti-Mouse IL-33R/ST2 mAb (A26401,5  $\mu\text{l}/\text{Test}$ ,right).

Flow cytometry:  $1 \times 10^6$  C2C12 cells (negative control,left) and P815 cells (right) were surface-stained with ABflo® 647 Rabbit anti-Mouse IL-33R/ST2 mAb (A26401,5  $\mu\text{l}/\text{Test}$ ,orange line) or ABflo® 647 Rabbit IgG isotype control (A22070,5  $\mu\text{l}/\text{Test}$ ,blue line). Non-fluorescently stained cells were used as blank control (red line).