

ABflo® 488 Rabbit anti-Human CD300 a/c mAb

Catalog No.: A26406

Basic Information

Observed MW

Calculated MW
33kDa

Category
Primary antibody

Applications
FC

Cross-Reactivity
Human

CloneNo number
ARC67449-ABflo488

Conjugate
ABflo® 488. Ex:491nm. Em:516nm.

Recommended Dilutions

FC 5 µl per 10⁶ cells in
100 µl volume

Background

This gene encodes a member of the CD300 glycoprotein family of cell surface proteins found on leukocytes involved in immune response signaling pathways. This gene is located on chromosome 17 in a cluster with all but one of the other family members. Multiple transcript variants encoding different isoforms have been found for this gene.

Immunogen Information

Gene ID
11314/10871

Swiss Prot
Q9UGN4/Q08708

Immunogen

Recombinant fusion protein containing a sequence corresponding to amino acids 18-178 of human CD300 a (NP_009192.2).

Synonyms

IRC1; IRC2; CLM-8; IRp60; IGSF12; CMRF35H; CMRF-35H; CMRF35-H; CMRF35H9; CMRF35-H9; IRC1/IRC2; CMRF-35-H9

Contact

☎ | 400-999-6126

✉ | cn.market@abclonal.com.cn

🌐 | www.abclonal.com.cn

Product Information

Source
Rabbit

Isotype
IgG

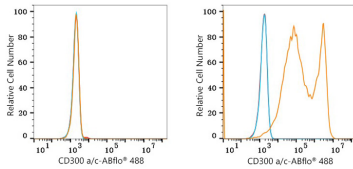
Purification
Affinity purification

Storage

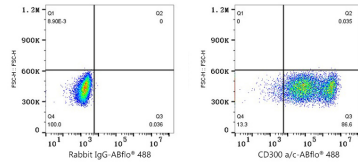
Store at 2-8°C. Avoid freeze.

Buffer: PBS with 0.09% Sodium azide, 0.2% BSA, pH7.3.

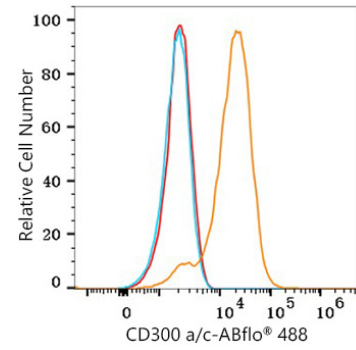
Validation Data



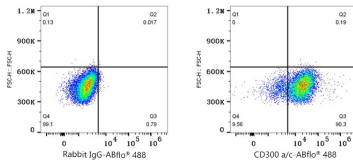
Flow cytometry: 1×10^6 293F cells (negative control, left) and 293F (Transfection, right) cells were surface-stained with ABflo® 488 Rabbit anti-Human CD300 a/c mAb (A26406, 5 μ l/Test, orange line) or ABflo® 488 Rabbit IgG isotype control (A22069, 5 μ l/Test, blue line). Non-fluorescently stained cells were used as blank control (red line).



Flow cytometry: 1×10^6 293F (Transfection) cells were surface-stained with ABflo® 488 Rabbit IgG isotype control (A22069, 5 μ l/Test, left) or ABflo® 488 Rabbit anti-Human CD300 a/c mAb (A26406, 5 μ l/Test, right).



Flow cytometry: 1×10^6 RPMI 8226 cells were surface-stained with ABflo® 488 Rabbit anti-Human CD300 a/c mAb (A26406, 5 μ l/Test, orange line) or ABflo® 488 Rabbit IgG isotype control (A22069, 5 μ l/Test, blue line). Non-fluorescently stained cells were used as blank control (red line).



Flow cytometry: 1×10^6 RPMI 8226 cells were surface-stained with ABflo® 488 Rabbit IgG isotype control (A22069, 5 μ l/Test, left) or ABflo® 488 Rabbit anti-Human CD300 a/c mAb (A26406, 5 μ l/Test, right).