

CD34 Rabbit PolymAb®

Catalog No.: A26414PM

Basic Information

Observed MW

90-120kDa

Calculated MW

41kDa/35kDa

Category

Primary antibody

Applications

WB, IHC-P, IF/ICC, ELISA

Cross-Reactivity

Human

Background

The protein encoded by this gene may play a role in the attachment of stem cells to the bone marrow extracellular matrix or to stromal cells. This single-pass membrane protein is highly glycosylated and phosphorylated by protein kinase C. Two transcript variants encoding different isoforms have been found for this gene.

Recommended Dilutions

WB 1:1000 - 1:3000

IHC-P 1:500 - 1:1000

IF/ICC 1:50 - 1:200

ELISA Recommended starting concentration is 1 µg/mL. Please optimize the concentration based on your specific assay requirements.

Immunogen Information

Gene ID

947

Swiss Prot

P28906

Immunogen

Recombinant fusion protein containing a sequence corresponding to amino acids 32-290 of human CD34 (NP_001020280.1).

Synonyms

CD34

Contact

☎ | 400-999-6126

✉ | cn.market@abclonal.com.cn

🌐 | www.abclonal.com.cn

Product Information

Source

Rabbit

Isotype

IgG

Purification

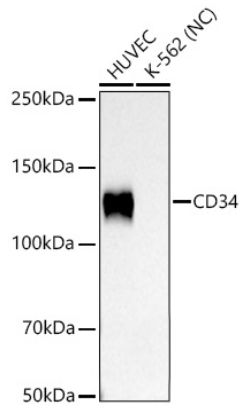
Affinity purification

Storage

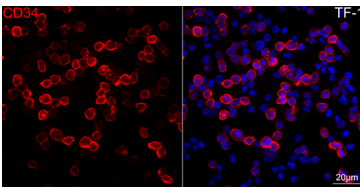
Store at -20°C. Avoid freeze / thaw cycles.

Buffer: PBS with 0.09% Sodium azide, 0.05% BSA, 50% glycerol, pH7.3.

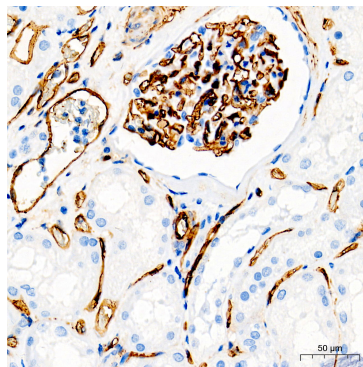
Validation Data



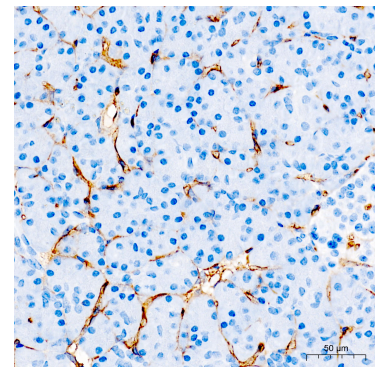
Western blot analysis of various lysates using CD34 Rabbit PolymAb® (A26414PM) at 1:3000 dilution incubated overnight at 4°C.
Secondary antibody: HRP-conjugated Goat anti-Rabbit IgG (H+L) (AS014) at 1:10000 dilution.
Lysates/proteins: 25 µg per lane.
Blocking buffer: 3% nonfat dry milk in TBST.
Detection: ECL Basic Kit (RM00020).
Negative control (NC): K-562
Exposure time: 90s.



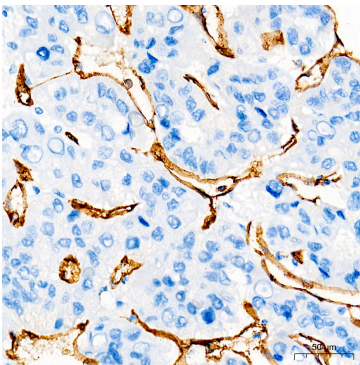
Confocal imaging of TF-1 cells using CD34 Rabbit PolymAb® (A26414PM, dilution 1:800) followed by a further incubation with Cy3 Goat Anti-Rabbit IgG (H+L) (AS007, dilution 1:500) (Red). DAPI was used for nuclear staining (Blue). Objective: 100x.



Immunohistochemistry analysis of paraffin-embedded Human kidney tissue using CD34 Rabbit PolymAb® (A26414PM) at a dilution of 1:4000 (40x lens). High pressure antigen retrieval performed with 0.01M Tris-EDTA Buffer(pH 9.0) prior to IHC staining.



Immunohistochemistry analysis of paraffin-embedded Human pancreas tissue using CD34 Rabbit PolymAb® (A26414PM) at a dilution of 1:4000 (40x lens). High pressure antigen retrieval performed with 0.01M Tris-EDTA Buffer(pH 9.0) prior to IHC staining.



Immunohistochemistry analysis of paraffin-embedded Human liver cancer tissue using CD34 Rabbit PolymAb® (A26414PM) at a dilution of 1:4000 (40x lens). High pressure antigen retrieval performed with 0.01M Tris-EDTA Buffer(pH 9.0) prior to IHC staining.