

# Ki67 Rabbit PolymAb®

Catalog No.: A26419-PM

## Basic Information

### Observed MW

359kDa

### Calculated MW

351kDa

### Category

Primary antibody

### Applications

WB, IHC-P, IF/ICC, ELISA

### Cross-Reactivity

Mouse, Rat

## Background

Predicted to enable protein C-terminus binding activity. Involved in regulation of chromatin organization. Acts upstream of or within cholangiocyte proliferation; hepatocyte proliferation; and meiotic cell cycle. Located in chromosome; cytoplasm; and nucleolus. Is expressed in several structures, including alimentary system; brain; genitourinary system; sensory organ; and skin. Human ortholog(s) of this gene implicated in Crohn's disease; breast cancer; human immunodeficiency virus infectious disease; and pancreatic cancer. Orthologous to human MKI67 (marker of proliferation Ki-67).

## Recommended Dilutions

**WB** 1:1000 - 1:5000

**IHC-P** 1:2000 - 1:12000

**IF/ICC** 1:2000 - 1:5000

**ELISA** Recommended starting concentration is 1 µg/mL. Please optimize the concentration based on your specific assay requirements.

## Immunogen Information

### Gene ID

17345

### Swiss Prot

E9PVX6

### Immunogen

Recombinant fusion protein containing a sequence corresponding to amino acids 1816-2163 of mouse Ki67 (NP\_001074586.2).

### Synonyms

Ki67; Ki-67; D630048A14Rik

## Contact

☎ | 400-999-6126

✉ | [cn.market@abclonal.com.cn](mailto:cn.market@abclonal.com.cn)

🌐 | [www.abclonal.com.cn](http://www.abclonal.com.cn)

## Product Information

### Source

Rabbit

### Isotype

IgG

### Purification

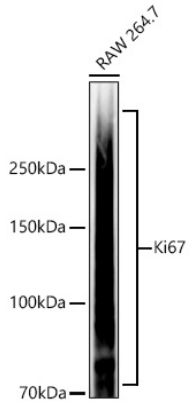
Affinity purification

### Storage

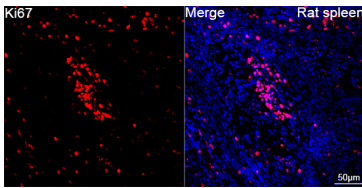
Store at -20°C. Avoid freeze / thaw cycles.

Buffer: PBS with 0.09% Sodium azide, 0.05% BSA, 50% glycerol, pH7.3.

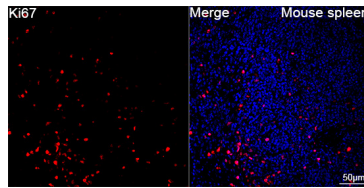
## Validation Data



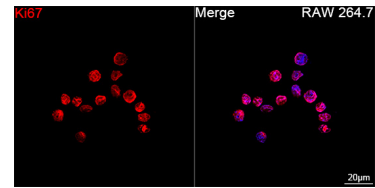
Western blot analysis of lysates from RAW 264.7 cells using Ki67 Rabbit PolymAb® (A26419-PM) at 1:2000 dilution incubated overnight at 4°C.  
 Secondary antibody: HRP-conjugated Goat anti-Rabbit IgG (H+L) (AS014) at 1:10000 dilution.  
 Lysates/proteins: 25 µg per lane.  
 Blocking buffer: 3% nonfat dry milk in TBST.  
 Detection: ECL Basic Kit (RM00020).  
 Exposure time: 5s.



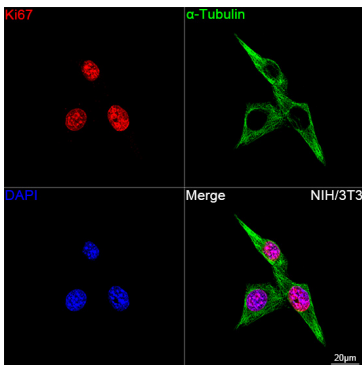
Confocal imaging of paraffin-embedded Rat spleen tissue using Ki67 Rabbit PolymAb® (A26419, dilution 1:4000) followed by a further incubation with Cy3 Goat Anti-Rabbit IgG (H+L) (AS007, dilution 1:500) (Red). DAPI was used for nuclear staining (Blue). High pressure antigen retrieval performed with 0.01M Citrate Buffer (pH 6.0) prior to IF staining. Objective: 40x.



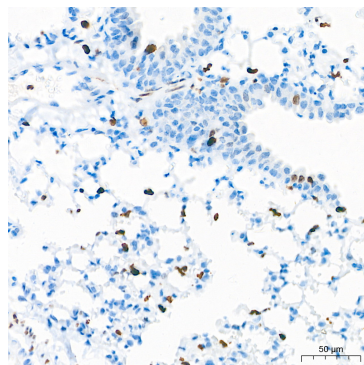
Confocal imaging of paraffin-embedded Mouse spleen tissue using Ki67 Rabbit PolymAb® (A26419, dilution 1:4000) followed by a further incubation with Cy3 Goat Anti-Rabbit IgG (H+L) (AS007, dilution 1:500) (Red). DAPI was used for nuclear staining (Blue). High pressure antigen retrieval performed with 0.01M Citrate Buffer (pH 6.0) prior to IF staining. Objective: 40x.



Confocal imaging of RAW 264.7 cells using Ki67 Rabbit PolymAb® (A26419, dilution 1:800) followed by a further incubation with Cy3 Goat Anti-Rabbit IgG (H+L) (AS007, dilution 1:500) (Red). DAPI was used for nuclear staining (Blue). Objective: 100x.



Confocal imaging of NIH/3T3 cells using Ki67 Rabbit PolymAb® (A26419, dilution 1:4000) followed by a further incubation with Cy3 Goat Anti-Rabbit IgG (H+L) (AS007, dilution 1:500) (Red). The cells were counterstained with  $\alpha$ -Tubulin Mouse mAb (AC012, dilution 1:400) followed by incubation with ABflo® 488-conjugated Goat Anti-Mouse IgG (H+L) Ab (AS076, dilution 1:500) (Green). DAPI was used for nuclear staining (Blue). Objective: 100x.



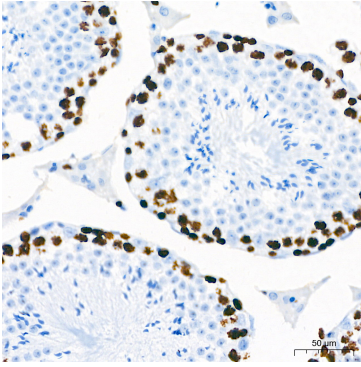
Immunohistochemistry analysis of paraffin-embedded Mouse lung tissue using Ki67 Rabbit PolymAb® (A26419-PM) at a dilution of 1:10000 (40x lens). High pressure antigen retrieval performed with 0.01M Tris-EDTA Buffer (pH 9.0) prior to IHC staining.



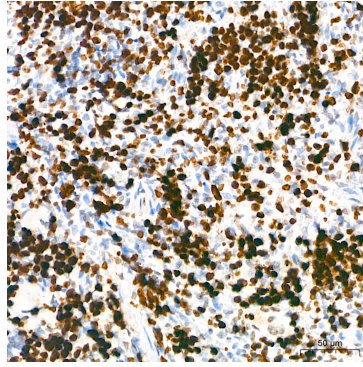
Immunohistochemistry analysis of paraffin-embedded Mouse spleen tissue using Ki67 Rabbit PolymAb® (A26419-PM) at a dilution of 1:10000 (40x lens). High pressure antigen retrieval performed with 0.01M Tris-EDTA Buffer (pH 9.0) prior to IHC staining.

## Validation Data

---



Immunohistochemistry analysis of paraffin-embedded Mouse testis tissue using Ki67 Rabbit PolymAb® (A26419-PM) at a dilution of 1:10000 (40x lens). High pressure antigen retrieval performed with 0.01M Tris-EDTA Buffer(pH 9.0) prior to IHC staining.



Immunohistochemistry analysis of paraffin-embedded Rat spleen tissue using Ki67 Rabbit PolymAb® (A26419-PM) at a dilution of 1:10000 (40x lens). High pressure antigen retrieval performed with 0.01M Tris-EDTA Buffer(pH 9.0) prior to IHC staining.