

ICAM2/CD102 Rabbit PolymAb®

Catalog No.: A26426PM

Basic Information

Observed MW

50-60kDa

Calculated MW

31kDa

Category

Primary antibody

Applications

WB,IHC-P,ELISA

Cross-Reactivity

Mouse

Background

Predicted to enable integrin binding activity. Predicted to be involved in cell adhesion. Located in microvillus; plasma membrane; and uropod. Is integral component of plasma membrane. Is expressed in central nervous system; extraembryonic component; female reproductive system; retina; and vascular element. Orthologous to human ICAM2 (intercellular adhesion molecule 2).

Recommended Dilutions

WB 1:1000 - 1:4000

IHC-P 1:500 - 1:2000

ELISA Recommended starting concentration is 1 µg/mL. Please optimize the concentration based on your specific assay requirements.

Immunogen Information

Gene ID

15896

Swiss Prot

P35330

Immunogen

Recombinant protein (or fragment). This information is considered to be commercially sensitive.

Synonyms

CD102; Ly-60; Icam-2

Contact

☎ | 400-999-6126

✉ | cn.market@abclonal.com.cn

🌐 | www.abclonal.com.cn

Product Information

Source

Rabbit

Isotype

IgG

Purification

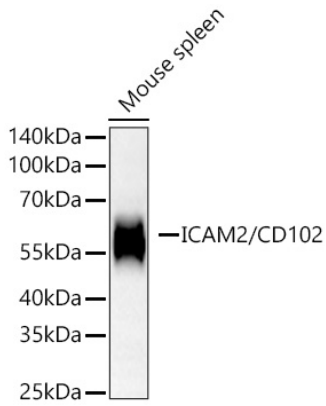
Affinity purification

Storage

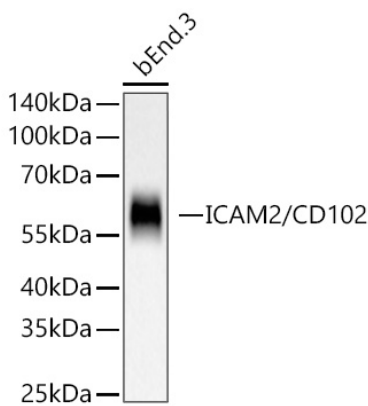
Store at -20°C. Avoid freeze / thaw cycles.

Buffer: PBS with 0.09% Sodium azide, 0.05% BSA, 50% glycerol, pH7.3.

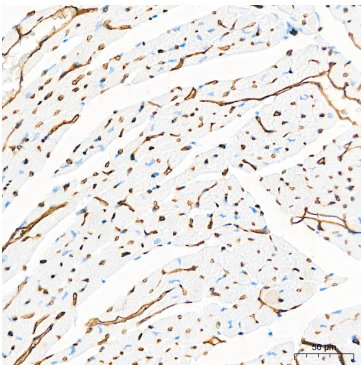
Validation Data



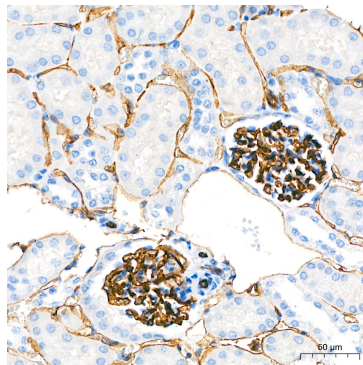
Western blot analysis of lysates from Mouse spleen using ICAM2/CD102 Rabbit PolymAb® (A26426PM) at 1:2000 dilution incubated overnight at 4°C.
Secondary antibody: HRP-conjugated Goat anti-Rabbit IgG (H+L) (AS014) at 1:10000 dilution.
Lysates/proteins: 25 µg per lane.
Blocking buffer: 3% nonfat dry milk in TBST.
Detection: ECL Basic Kit (RM00020).
Exposure time: 90s.



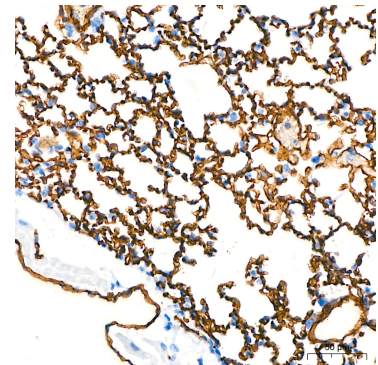
Western blot analysis of lysates from bEnd.3 cells using ICAM2/CD102 Rabbit PolymAb® (A26426PM) at 1:2000 dilution incubated overnight at 4°C.
Secondary antibody: HRP-conjugated Goat anti-Rabbit IgG (H+L) (AS014) at 1:10000 dilution.
Lysates/proteins: 25 µg per lane.
Blocking buffer: 3% nonfat dry milk in TBST.
Detection: ECL Basic Kit (RM00020).
Exposure time: 20s.



Immunohistochemistry analysis of paraffin-embedded Mouse heart tissue using ICAM2/CD102 Rabbit PolymAb® (A26426PM) at a dilution of 1:1000 (40x lens). High pressure antigen retrieval performed with 0.01M Tris-EDTA Buffer(pH 9.0) prior to IHC staining.



Immunohistochemistry analysis of paraffin-embedded Mouse kidney tissue using ICAM2/CD102 Rabbit PolymAb® (A26426PM) at a dilution of 1:1000 (40x lens). High pressure antigen retrieval performed with 0.01M Tris-EDTA Buffer(pH 9.0) prior to IHC staining.



Immunohistochemistry analysis of paraffin-embedded Mouse lung tissue using ICAM2/CD102 Rabbit PolymAb® (A26426PM) at a dilution of 1:1000 (40x lens). High pressure antigen retrieval performed with 0.01M Tris-EDTA Buffer(pH 9.0) prior to IHC staining.