

# CaSR Rabbit mAb

Catalog No.: A26435

Recombinant

1 Publications

## Basic Information

### Observed MW

120-260kDa

### Calculated MW

121kDa

### Category

Primary antibody

### Applications

WB,IF-P,IHC-P,ELISA

### Cross-Reactivity

Human, Mouse, Rat

### CloneNo number

ARC69622

## Background

The protein encoded by this gene is a plasma membrane G protein-coupled receptor that senses small changes in circulating calcium concentration. The encoded protein couples this information to intracellular signaling pathways that modify parathyroid hormone secretion or renal cation handling, and thus this protein plays an essential role in maintaining mineral ion homeostasis. Mutations in this gene are a cause of familial hypocalciuric hypercalcemia, neonatal severe hyperparathyroidism, and autosomal dominant hypocalcemia.

## Recommended Dilutions

**WB** 1:2000 - 1:6000

**IF-P** 1:50 - 1:200

**IHC-P** 1:500 - 1:1000

**ELISA** Recommended starting concentration is 1 µg/mL. Please optimize the concentration based on your specific assay requirements.

## Immunogen Information

### Gene ID

846

### Swiss Prot

P41180

### Immunogen

Synthetic peptide. This information is considered to be commercially sensitive.

### Synonyms

CAR; FHH; FIH; HHC; EIG8; HHC1; NSHPT; PCAR1; hCasR; GPRC2A; HYPOC1

## Contact

☎ | 400-999-6126

✉ | [cn.market@abclonal.com.cn](mailto:cn.market@abclonal.com.cn)

🌐 | [www.abclonal.com.cn](http://www.abclonal.com.cn)

## Product Information

### Source

Rabbit

### Isotype

IgG

### Purification

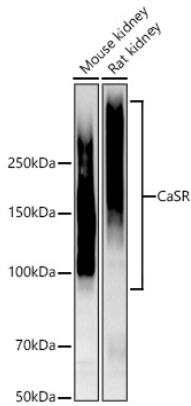
Affinity purification

### Storage

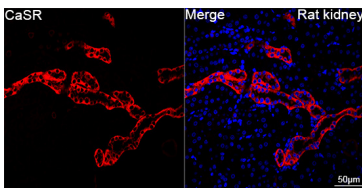
Store at -20°C. Avoid freeze / thaw cycles.

Buffer: PBS with 0.09% Sodium azide,0.05% BSA,50% glycerol,pH7.3.

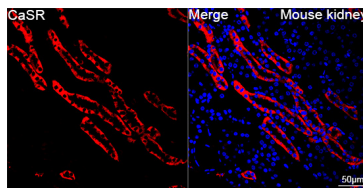
## Validation Data



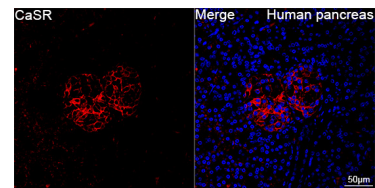
Western blot analysis of various lysates using CaSR Rabbit mAb (A26435) at 1:5000 dilution incubated overnight at 4°C.  
 Secondary antibody: HRP-conjugated Goat anti-Rabbit IgG (H+L) (AS014) at 1:10000 dilution.  
 Lysates/proteins: 25 µg per lane.  
 Blocking buffer: 3% nonfat dry milk in TBST.  
 Detection: ECL Basic Kit (RM00020).  
 Exposure time: 60s.



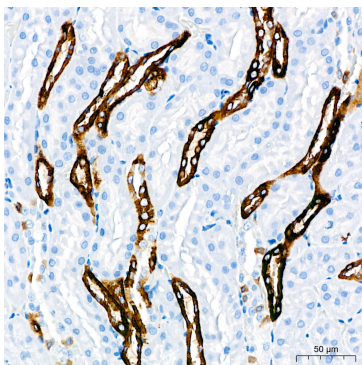
Confocal imaging of paraffin-embedded Rat kidney tissue using CaSR Rabbit mAb (A26435, dilution 1:200) followed by a further incubation with Cy3 Goat Anti-Rabbit IgG (H+L) (AS007, dilution 1:500) (Red). DAPI was used for nuclear staining (Blue). High pressure antigen retrieval performed with 0.01M Citrate Buffer(pH 6.0) prior to IF staining. Objective: 40x.



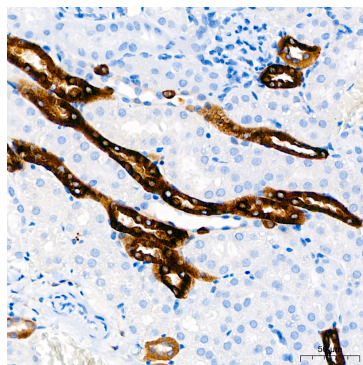
Confocal imaging of paraffin-embedded Mouse kidney tissue using CaSR Rabbit mAb (A26435, dilution 1:200) followed by a further incubation with Cy3 Goat Anti-Rabbit IgG (H+L) (AS007, dilution 1:500) (Red). DAPI was used for nuclear staining (Blue). High pressure antigen retrieval performed with 0.01M Citrate Buffer(pH 6.0) prior to IF staining. Objective: 40x.



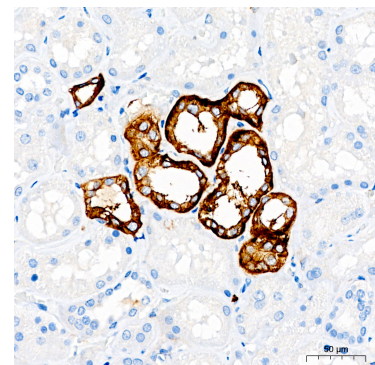
Confocal imaging of paraffin-embedded Human pancreas tissue using CaSR Rabbit mAb (A26435, dilution 1:200) followed by a further incubation with Cy3 Goat Anti-Rabbit IgG (H+L) (AS007, dilution 1:500) (Red). DAPI was used for nuclear staining (Blue). High pressure antigen retrieval performed with 0.01M Citrate Buffer(pH 6.0) prior to IF staining. Objective: 40x.



Immunohistochemistry analysis of paraffin-embedded Rat kidney tissue using CaSR Rabbit mAb (A26435) at a dilution of 1:800 (40x lens). High pressure antigen retrieval performed with 0.01M Citrate Buffer(pH 6.0) prior to IHC staining.



Immunohistochemistry analysis of paraffin-embedded Mouse kidney tissue using CaSR Rabbit mAb (A26435) at a dilution of 1:800 (40x lens). High pressure antigen retrieval performed with 0.01M Citrate Buffer(pH 6.0) prior to IHC staining.



Immunohistochemistry analysis of paraffin-embedded Human kidney tissue using CaSR Rabbit mAb (A26435) at a dilution of 1:800 (40x lens). High pressure antigen retrieval performed with 0.01M Citrate Buffer(pH 6.0) prior to IHC staining.