

ABflo® 450 Rabbit anti-Human LAMP1/CD107a mAb

Catalog No.: A26454

Basic Information

Observed MW

Refer to figures

Calculated MW

38kDa/45kDa

Category

Primary antibody

Applications

FC (intra)

Cross-Reactivity

Human

CloneNo number

ARC52154-ABflo450

Conjugate

ABflo® 450. Ex:406nm. Em:445nm.

Recommended Dilutions

FC (intra)	5 μ l per 10^6 cells in 100 μ l volume
-------------------	---

Background

The protein encoded by this gene is a member of a family of membrane glycoproteins. This glycoprotein provides selectins with carbohydrate ligands. It may also play a role in tumor cell metastasis.

Immunogen Information

Gene ID

3916

Swiss Prot

P11279

Immunogen

Recombinant fusion protein containing a sequence corresponding to amino acids 29-382 of human LAMP1/CD107a (NP_005552.3).


Synonyms

LAMPA; CD107a; LGP120

Contact

	400-999-6126
--	--------------

	cn.market@abclonal.com.cn
--	---------------------------

	www.abclonal.com.cn
--	---------------------

Product Information

Source

Rabbit

Isotype

IgG

Purification

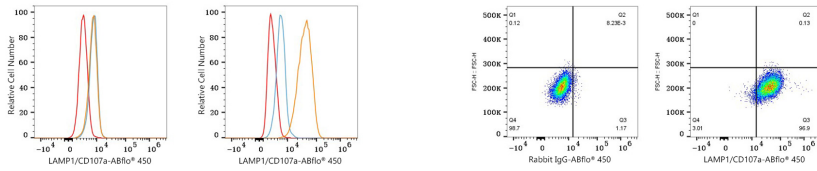
Affinity purification

Storage

Store at 2-8°C. Avoid freeze.

Buffer: PBS with 0.09% Sodium azide,0.2% BSA,pH7.3.

Validation Data



Flow cytometry: 1×10^6 knockout (KO) HeLa cells (negative control, left) and HeLa cells (right) were intracellularly-stained with ABflo® 450 Rabbit anti-Human LAMP1/CD107a mAb (A26454, 5 μ l/Test, orange line) or ABflo® 450 Rabbit IgG isotype control (5 μ l/Test, blue line). Non-fluorescently stained cells were used as blank control (red line).

Flow cytometry: 1×10^6 HeLa cells were intracellularly-stained with ABflo® 450 Rabbit IgG isotype control (5 μ l/Test, left) or ABflo® 450 Rabbit anti-Human LAMP1/CD107a mAb (A26454, 5 μ l/Test, right).