

ABflo® 700 Rabbit anti-Human LAMP1/CD107a mAb

Catalog No.: A26455

Basic Information

Observed MW

Refer to figures

Calculated MW

38kDa/45kDa

Category

Primary antibody

Applications

FC (intra)

Cross-Reactivity

Human

CloneNo number

ARC52154-ABflo700

Conjugate

ABflo® 700. Ex:690nm. Em:713nm.

Recommended Dilutions

FC (intra) 5 µl per 10⁶ cells in
 100 µl volume

Background

The protein encoded by this gene is a member of a family of membrane glycoproteins. This glycoprotein provides selectins with carbohydrate ligands. It may also play a role in tumor cell metastasis.

Immunogen Information

Gene ID

3916

Swiss Prot

P11279

Immunogen

Recombinant fusion protein containing a sequence corresponding to amino acids 29-382 of human LAMP1/CD107a (NP_005552.3).

Synonyms

LAMPA; CD107a; LGP120

Contact

 | 400-999-6126

 | cn.market@abclonal.com.cn

 | www.abclonal.com.cn

Product Information

Source

Rabbit

Isotype

IgG

Purification

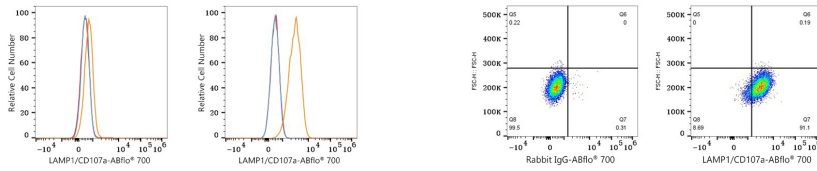
Affinity purification

Storage

Store at 2-8°C. Avoid freeze.

Buffer: PBS with 0.09% Sodium azide, 0.2% BSA, pH7.3.

Validation Data



Flow cytometry: 1×10^6 knockout (KO) HeLa cells (negative control, left) and HeLa cells (right) were intracellularly-stained with ABflo® 700 Rabbit anti-Human LAMP1/CD107a mAb (A26455,5 μ l/Test, orange line) or ABflo® 700 Rabbit IgG isotype control (A25976,5 μ l/Test, blue line). Non-fluorescently stained cells were used as blank control (red line).

Flow cytometry: 1×10^6 HeLa cells were intracellularly-stained with ABflo® 700 Rabbit IgG isotype control (A25976,5 μ l/Test, left) or ABflo® 700 Rabbit anti-Human LAMP1/CD107a mAb (A26455,5 μ l/Test, right).