

ABflo® 700 Rabbit anti-Human CD58 mAb

Catalog No.: A26458

Basic Information

Observed MW

Refer to figures

Calculated MW

26kDa/27kDa/28kDa

Category

Primary antibody

Applications

FC

Cross-Reactivity

Human

CloneNo number

ARC54829

Conjugate

ABflo® 700. Ex:690nm. Em:713nm.

Recommended Dilutions

FC 5 µl per 10⁶ cells in
100 µl volume

Background

This gene encodes a member of the immunoglobulin superfamily. The encoded protein is a ligand of the T lymphocyte CD2 protein, and functions in adhesion and activation of T lymphocytes. The protein is localized to the plasma membrane. Alternatively spliced transcript variants have been described.

Immunogen Information

Gene ID
965

Swiss Prot
P19256

Immunogen

Recombinant protein (or fragment). This information is considered to be commercially sensitive.


Synonyms

ag3; LFA3; LFA-3

Contact

 | 400-999-6126

 | cn.market@abclonal.com.cn

 | www.abclonal.com.cn

Product Information

Source
Rabbit

Isotype
IgG

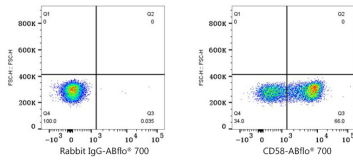
Purification
Affinity purification

Storage

Store at 2-8°C. Avoid freeze.

Buffer: PBS with 0.09% Sodium azide, 0.2% BSA, pH7.3.

Validation Data



Flow cytometry: 1×10^6 Human PBMC were surface-stained with ABflo® 700 Rabbit IgG isotype control (A25976,5 μ l/Test,left) or ABflo® 700 Rabbit anti-Human CD58 mAb (A26458,5 μ l/Test,right). Cells in the lymphocyte gate were used for analysis.