

ABflo® 700 Rabbit anti-Human CD66b mAb

Catalog No.: A26462

Basic Information

Observed MW

Refer to figures

Calculated MW

38kDa

Category

Primary antibody

Applications

FC

Cross-Reactivity

Human

CloneNo number

ARC57405-ABflo700

Conjugate

ABflo® 700. Ex:690nm. Em:713nm.

Background

Enables protein heterodimerization activity. Involved in heterophilic cell-cell adhesion via plasma membrane cell adhesion molecules. Located in cell surface and extracellular space. Biomarker of severe acute respiratory syndrome.

Recommended Dilutions

FC 5 µl per 10⁶ cells in
100 µl volume

Immunogen Information

Gene ID

1088

Swiss Prot

P31997

Immunogen

Recombinant fusion protein containing a sequence corresponding to amino acids 35-319 of human CD66b (NP_001807.2)

Synonyms

CD67; CGM6; CD66b; NCA-95

Contact

 | 400-999-6126

 | cn.market@abclonal.com.cn

 | www.abclonal.com.cn

Product Information

Source

Rabbit

Isotype

IgG

Purification

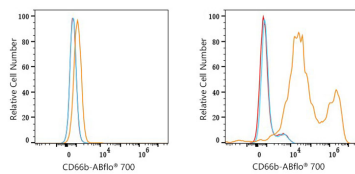
Affinity purification

Storage

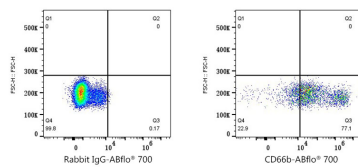
Store at 2-8°C. Avoid freeze.

Buffer: PBS with 0.09% Sodium azide, 0.2% BSA, pH7.3.

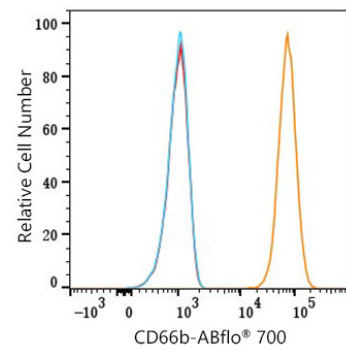
Validation Data



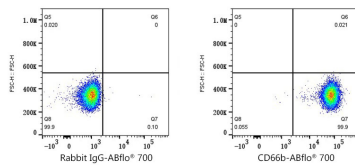
Flow cytometry: 1×10^6 293T cells (negative control, left) and 293T (Transfection, right) cells were surface-stained with ABflo® 700 Rabbit anti-Human CD66b mAb (A26462, 5 μ l/Test, orange line) or ABflo® 700 Rabbit IgG isotype control (A25976, 5 μ l/Test, blue line). Non-fluorescently stained cells were used as blank control (red line).



Flow cytometry: 1×10^6 293T (Transfection) cells were surface-stained with ABflo® 700 Rabbit IgG isotype control (A25976, 5 μ l/Test, left) or ABflo® 700 Rabbit anti-Human CD66b mAb (A26462, 5 μ l/Test, right).



Flow cytometry: 1×10^6 Human PBMC were surface-stained with ABflo® 700 Rabbit anti-Human CD66b mAb (A26462, 5 μ l/Test, orange line) or ABflo® 700 Rabbit IgG isotype control (A25976, 5 μ l/Test, blue line). Non-fluorescently stained cells were used as blank control (red line).



Flow cytometry: 1×10^6 Human PBMC were surface-stained with ABflo® 700 Rabbit IgG isotype control (A25976, 5 μ l/Test, left) or ABflo® 700 Rabbit anti-Human CD66b mAb (A26462, 5 μ l/Test, right). Cells in the Monocyte gate were used for analysis.