

ABflo® 450 Rabbit anti-Human/Monkey CD20 mAb

Catalog No.: A26465

Basic Information

Observed MW

Refer to figures

Calculated MW

14kDa/33kDa

Category

Primary antibody

Applications

FC

Cross-Reactivity

Human, Cynomolgus

CloneNo number

ARC51683

Conjugate

ABflo® 450. Ex:406nm. Em:445nm.

Recommended Dilutions

FC 5 µl per 10⁶ cells in
100 µl volume

Background

This gene encodes a member of the membrane-spanning 4A gene family. Members of this nascent protein family are characterized by common structural features and similar intron/exon splice boundaries and display unique expression patterns among hematopoietic cells and nonlymphoid tissues. This gene encodes a B-lymphocyte surface molecule which plays a role in the development and differentiation of B-cells into plasma cells. This family member is localized to 11q12, among a cluster of family members. Alternative splicing of this gene results in two transcript variants which encode the same protein.

Immunogen Information

Gene ID

Hu 931 Cyon 102118491

Swiss Prot

P11836

Immunogen

Synthetic peptide. This information is considered to be commercially sensitive.

Synonyms

B1; S7; Bp35; CD20; FMC7; CVID5; LEU-16

Contact

 | 400-999-6126

 | cn.market@abclonal.com.cn

 | www.abclonal.com.cn

Product Information

Source

Rabbit

Isotype

IgG

Purification

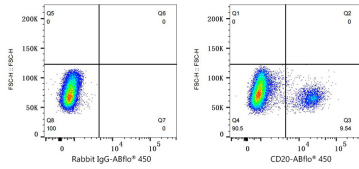
Affinity purification

Storage

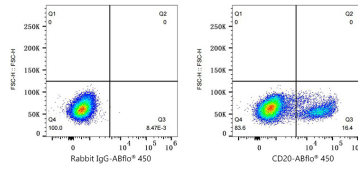
Store at 2-8°C. Avoid freeze.

Buffer: PBS with 0.09% Sodium azide, 0.2% BSA, pH7.3.

Validation Data



Flow cytometry: 1×10^6 Human PBMC were surface-stained with ABflo® 450 Rabbit IgG isotype control (A27451,5 $\mu\text{l}/\text{Test}$,left) or ABflo® 450 Rabbit anti-Human/Monkey CD20 mAb (A26465,5 $\mu\text{l}/\text{Test}$,right). Cells in the lymphocyte gate were used for analysis.



Flow cytometry: 1×10^6 Cynomolgus PBMC were surface-stained with ABflo® 450 Rabbit IgG isotype control (A27451,5 $\mu\text{l}/\text{Test}$,left) or ABflo® 450 Rabbit anti-Human/Monkey CD20 mAb (A26465,5 $\mu\text{l}/\text{Test}$,right). Cells in the lymphocyte gate were used for analysis.