

ABflo® 610 Rabbit anti-Human CD79B/Igβ mAb

Catalog No.: A26468

Basic Information

Observed MW

Calculated MW

26kDa

Category

Primary antibody

Applications

FC

Cross-Reactivity

Human

CloneNo number

ARC61823

Conjugate

ABflo® 610. Ex:421nm. Em:612nm.

Background

The B lymphocyte antigen receptor is a multimeric complex that includes the antigen-specific component, surface immunoglobulin (Ig). Surface Ig non-covalently associates with two other proteins, Ig-alpha and Ig-beta, which are necessary for expression and function of the B-cell antigen receptor. This gene encodes the Ig-beta protein of the B-cell antigen component. Alternatively spliced transcript variants encoding different isoforms have been described.

Recommended Dilutions

FC 5 µl per 10⁶ cells in
100 µl volume

Immunogen Information

Gene ID

974

Swiss Prot

P40259

Immunogen

Recombinant protein (or fragment). This information is considered to be commercially sensitive.

Synonyms

B29; IGB; AGM6; Igbeta

Contact

☎ | 400-999-6126

✉ | cn.market@abclonal.com.cn

🌐 | www.abclonal.com.cn

Product Information

Source

Rabbit

Isotype

IgG

Purification

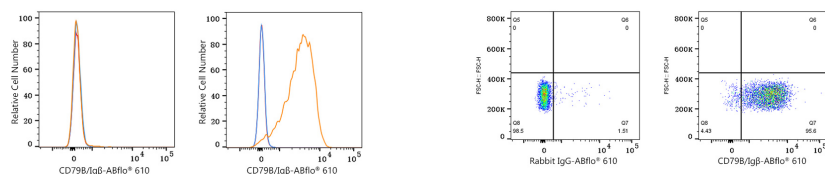
Affinity purification

Storage

Store at 2-8°C. Avoid freeze.

Buffer: PBS with 0.09% Sodium azide, 0.2% BSA, pH7.3.

Validation Data



Flow cytometry: 1X10⁶ HAP1 cells (negative control, left) and Daudi cells (right) were surface-stained with ABflo® 610 Rabbit anti-Human CD79b/IgG mAb (A26468, 5 µl/Test, orange line) or ABflo® 610 Rabbit IgG isotype control (A25826, 5 µl/Test, blue line). Non-fluorescently stained cells were used as blank control (red line).

Flow cytometry: 1X10⁶ Daudi cells were surface-stained with ABflo® 610 Rabbit IgG isotype control (A25826, 5 µl/Test, left) or ABflo® 610 Rabbit anti-Human CD79b/IgG mAb (A26468, 5 µl/Test, right).