

# PE Rabbit anti-Human CD66a/CEACAM1 mAb

**Catalog No.: A26473**

## Basic Information

**Observed MW****Calculated MW**

58kDa

**Category**

Primary antibody

**Applications**

FC

**Cross-Reactivity**

Human

**CloneNo number**

ARC63130

**Conjugate**

PE. Ex:565nm. Em:574nm.

## Background

This gene encodes a member of the carcinoembryonic antigen (CEA) gene family, which belongs to the immunoglobulin superfamily. Two subgroups of the CEA family, the CEA cell adhesion molecules and the pregnancy-specific glycoproteins, are located within a 1.2 Mb cluster on the long arm of chromosome 19. Eleven pseudogenes of the CEA cell adhesion molecule subgroup are also found in the cluster. The encoded protein was originally described in bile ducts of liver as biliary glycoprotein. Subsequently, it was found to be a cell-cell adhesion molecule detected on leukocytes, epithelia, and endothelia. The encoded protein mediates cell adhesion via homophilic as well as heterophilic binding to other proteins of the subgroup. Multiple cellular activities have been attributed to the encoded protein, including roles in the differentiation and arrangement of tissue three-dimensional structure, angiogenesis, apoptosis, tumor suppression, metastasis, and the modulation of innate and adaptive immune responses. Multiple transcript variants encoding different isoforms have been reported, but the full-length nature of all variants has not been defined.

## Recommended Dilutions

**FC** 5 µl per 10<sup>6</sup> cells in  
100 µl volume

## Immunogen Information

**Gene ID**

634

**Swiss Prot**

P13688

**Immunogen**

Recombinant protein (or fragment). This information is considered to be commercially sensitive.

**Synonyms**

CEACAM1; BGP; BGP1; BGPI; carcinoembryonic antigen-related cell adhesion molecule 1

## Contact

 | 400-999-6126 | [cn.market@abclonal.com.cn](mailto:cn.market@abclonal.com.cn) | [www.abclonal.com.cn](http://www.abclonal.com.cn)

## Product Information

**Source**

Rabbit

**Isotype**

IgG

**Purification**

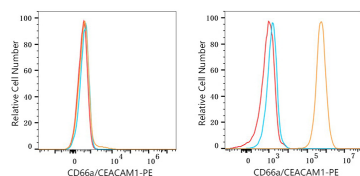
Affinity purification

**Storage**

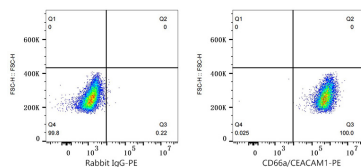
Store at 2-8°C. Avoid freeze.

Buffer: PBS with 0.09% Sodium azide, 0.2% BSA, pH7.3.

## Validation Data



Flow cytometry: 1X10<sup>6</sup> HeLa cells (negative control, left) and Hep G2 cells (right) were surface-stained with PE Rabbit anti-Human CD66a/CEACAM1 mAb (A26473, 5 µl/Test, orange line) or PE Rabbit IgG isotype control (A24172, 5 µl/Test, blue line). Non-fluorescently stained cells were used as blank control (red line).



Flow cytometry: 1X10<sup>6</sup> Hep G2 cells were surface-stained with PE Rabbit IgG isotype control (A24172, 5 µl/Test, left) or PE Rabbit anti-Human CD66a/CEACAM1 mAb (A26473, 5 µl/Test, right).