

APC Rabbit anti-Human CD66a/CEACAM1 mAb

Catalog No.: A26474

Basic Information

Observed MW

Calculated MW

58kDa

Category

Primary antibody

Applications

FC

Cross-Reactivity

Human

CloneNo number

ARC63130-APC

Conjugate

APC. Ex:650nm. Em:660nm.

Background

This gene encodes a member of the carcinoembryonic antigen (CEA) gene family, which belongs to the immunoglobulin superfamily. Two subgroups of the CEA family, the CEA cell adhesion molecules and the pregnancy-specific glycoproteins, are located within a 1.2 Mb cluster on the long arm of chromosome 19. Eleven pseudogenes of the CEA cell adhesion molecule subgroup are also found in the cluster. The encoded protein was originally described in bile ducts of liver as biliary glycoprotein. Subsequently, it was found to be a cell-cell adhesion molecule detected on leukocytes, epithelia, and endothelia. The encoded protein mediates cell adhesion via homophilic as well as heterophilic binding to other proteins of the subgroup. Multiple cellular activities have been attributed to the encoded protein, including roles in the differentiation and arrangement of tissue three-dimensional structure, angiogenesis, apoptosis, tumor suppression, metastasis, and the modulation of innate and adaptive immune responses. Multiple transcript variants encoding different isoforms have been reported, but the full-length nature of all variants has not been defined.

Recommended Dilutions

FC 5 µl per 10⁶ cells in
100 µl volume

Immunogen Information

Gene ID

634

Swiss Prot

P13688

Immunogen

Recombinant fusion protein containing a sequence corresponding to amino acids 35-428 of human CD66a/CEACAM1 (NP_001703.2).

Synonyms

CEACAM1; BGP; BGP1; BGPI; carcinoembryonic antigen-related cell adhesion molecule 1

Contact

☎ | 400-999-6126

✉ | cn.market@abclonal.com.cn

🌐 | www.abclonal.com.cn

Product Information

Source

Rabbit

Isotype

IgG

Purification

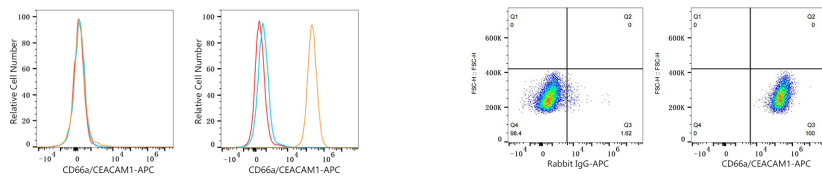
Affinity purification

Storage

Store at 2-8°C. Avoid freeze.

Buffer: PBS with 0.09% Sodium azide, 0.2% BSA, pH7.3.

Validation Data



Flow cytometry: 1×10^6 HeLa cells (negative control, left) and Hep G2 cells (right) were surface-stained with APC Rabbit anti-Human CD66a/CEACAM1 mAb (A26474, 5 μ l/Test, orange line) or APC Rabbit IgG isotype control (A24173, 5 μ l/Test, blue line). Non-fluorescently stained cells were used as blank control (red line).

Flow cytometry: 1×10^6 Hep G2 cells were surface-stained with APC Rabbit IgG isotype control (A24173, 5 μ l/Test, left) or APC Rabbit anti-Human CD66a/CEACAM1 mAb (A26474, 5 μ l/Test, right).