

# PE Rabbit anti-Mouse E-Cadherin/CD324 mAb

Catalog No.: A26477

## Basic Information

### Observed MW

### Calculated MW

98kDa

### Category

Primary antibody

### Applications

FC

### Cross-Reactivity

Mouse

### CloneNo number

ARC68219-PE

### Conjugate

PE. Ex:565nm. Em:574nm.

## Background

This gene encodes E-cadherin, a calcium-dependent cell adhesion molecule that functions in the establishment and maintenance of epithelial cell morphology during embryogenesis and adulthood. The encoded preproprotein undergoes proteolytic processing to generate a mature protein. Targeted mutations disrupting binding of calcium to the encoded protein in mice cause death in utero due to failed blastocyst and trophoctoderm formation. This gene is located adjacent to a related cadherin gene on chromosome 8.

## Recommended Dilutions

FC 5  $\mu$ l per  $10^6$  cells in  
100  $\mu$ l volume

## Immunogen Information

### Gene ID

12550

### Swiss Prot

P09803

### Immunogen

Recombinant fusion protein containing a sequence corresponding to amino acids 157-369 of mouse E-Cadherin/CD324 (NP\_033994.1).

### Synonyms

Um; UVO; Ecad; ARC-1; E-cad; L-CAM

## Contact

☎ | 400-999-6126

✉ | [cn.market@abclonal.com.cn](mailto:cn.market@abclonal.com.cn)

🌐 | [www.abclonal.com.cn](http://www.abclonal.com.cn)

## Product Information

### Source

Rabbit

### Isotype

IgG

### Purification

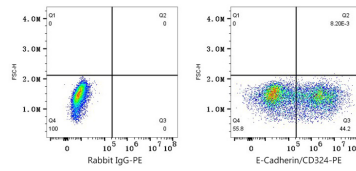
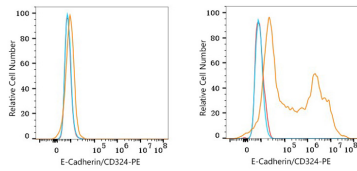
Affinity purification

### Storage

Store at 2-8°C. Avoid freeze.

Buffer: PBS with 0.09% Sodium azide, 0.2% BSA, pH7.3.

## Validation Data



Flow cytometry:  $1 \times 10^6$  CHO-S cells (negative control, left) and CHO-S (Transfection, right) cells were surface-stained with PE Rabbit anti-Mouse E-Cadherin/CD324 mAb (A26477,5  $\mu\text{l}/\text{Test}$ , orange line) or PE Rabbit IgG isotype control (A24172,5  $\mu\text{l}/\text{Test}$ , blue line). Non-fluorescently stained cells were used as blank control (red line).

Flow cytometry:  $1 \times 10^6$  CHO-S (Transfection) cells were surface-stained with PE Rabbit IgG isotype control (A24172,5  $\mu\text{l}/\text{Test}$ , left) or PE Rabbit anti-Mouse E-Cadherin/CD324 mAb (A26477,5  $\mu\text{l}/\text{Test}$ , right).