

# ABflo® 450 Rabbit anti-Human/Monkey IgD mAb

Catalog No.: A26480

## Basic Information

### Observed MW

Refer to figures

### Calculated MW

47kDa

### Category

Primary antibody

### Applications

FC

### Cross-Reactivity

Human, Cynomolgus

### CloneNo number

ARC60051

### Conjugate

ABflo® 450. Ex:406nm. Em:445nm.

## Recommended Dilutions

**FC** 5 µl per 10<sup>6</sup> cells in  
100 µl volume

## Background

IgD is the major antigen receptor isotype on the surface of most peripheral B-cells, where it is coexpressed with IgM. The membrane-bound IgD (mIgD) induces the phosphorylation of CD79A and CD79B by the Src family of protein tyrosine kinases.

## Immunogen Information

### Gene ID

3495

### Swiss Prot

P01880

### Immunogen

Recombinant protein (or fragment). This information is considered to be commercially sensitive.

### Synonyms

IGHD

## Contact

 | 400-999-6126

 | [cn.market@abclonal.com.cn](mailto:cn.market@abclonal.com.cn)

 | [www.abclonal.com.cn](http://www.abclonal.com.cn)

## Product Information

### Source

Rabbit

### Isotype

IgG

### Purification

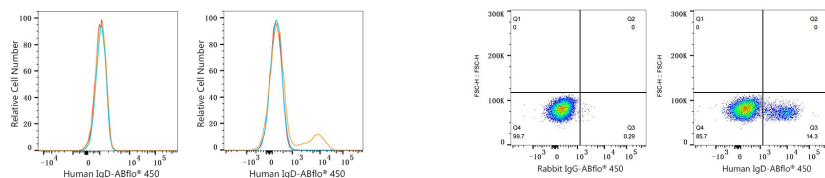
Affinity purification

### Storage

Store at 2-8°C. Avoid freeze.

Buffer: PBS with 0.09% Sodium azide, 0.2% BSA, pH7.3.

## Validation Data



Flow cytometry:  $1 \times 10^6$  Jurkat cells (negative control, left) and Human PBMC (right) were surface-stained with ABflo® 450 Rabbit anti-Human IgD mAb (A26480, 5  $\mu$ l/Test, orange line) or ABflo® 450 Rabbit IgG isotype control (5  $\mu$ l/Test, blue line). Non-fluorescently stained cells were used as blank control (red line).

Flow cytometry:  $1 \times 10^6$  Human PBMC were surface-stained with ABflo® 450 Rabbit IgG isotype control (5  $\mu$ l/Test, left) or ABflo® 450 Rabbit anti-Human IgD mAb (A26480, 5  $\mu$ l/Test, right).