

# Integrin alpha 1/CD49a Rabbit mAb

**Catalog No.: A26489** Recombinant

## Basic Information

**Observed MW**

200kDa

**Calculated MW**

131kDa

**Category**

Primary antibody

**Applications**

WB,IF/ICC,ELISA

**Cross-Reactivity**

Mouse, Rat

**CloneNo number**

ARC68866

## Background

Predicted to enable collagen binding activity involved in cell-matrix adhesion; protein phosphatase binding activity; and signaling receptor binding activity. Involved in negative regulation of epidermal growth factor receptor signaling pathway. Acts upstream of or within cell adhesion; cellular extravasation; and neutrophil chemotaxis. Located in basal part of cell and external side of plasma membrane. Is expressed in blood vessel endothelium; embryo mesenchyme; intestine smooth muscle; and lung. Orthologous to human ITGA1 (integrin subunit alpha 1).

## Recommended Dilutions

**WB** 1:125000 - 1:500000

**IF/ICC** 1:200 - 1:800

**ELISA** Recommended starting concentration is 1 µg/mL. Please optimize the concentration based on your specific assay requirements.

## Immunogen Information

**Gene ID**

109700

**Swiss Prot**

Q3V3R4

**Immunogen**

Recombinant fusion protein containing a sequence corresponding to amino acids 29-1141 of mouse Integrin alpha 1/CD49a (NP\_001028400.2).

**Synonyms**

Vla1; CD49A; E130012M19Rik

## Contact

 | 400-999-6126

 | [cn.market@abclonal.com.cn](mailto:cn.market@abclonal.com.cn)
 | [www.abclonal.com.cn](http://www.abclonal.com.cn)

## Product Information

**Source**

Rabbit

**Isotype**

IgG

**Purification**

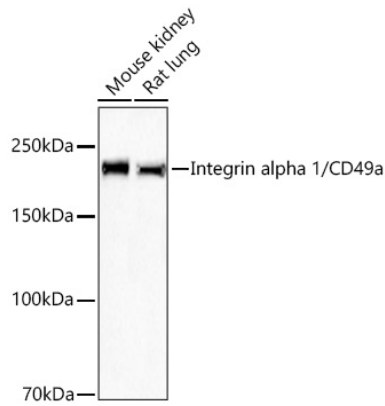
Affinity purification

**Storage**

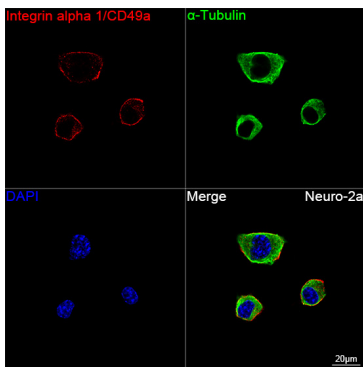
Store at -20°C. Avoid freeze / thaw cycles.

Buffer: PBS with 0.09% Sodium azide,0.05% BSA,50% glycerol,pH7.3.

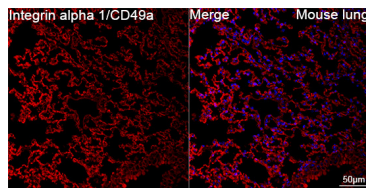
## Validation Data



Western blot analysis of various lysates using Integrin alpha 1/CD49a Rabbit mAb (A26489) at 1:250000 dilution incubated overnight at 4°C.  
Secondary antibody: HRP-conjugated Goat anti-Rabbit IgG (H+L) (AS014) at 1:10000 dilution.  
Lysates/proteins: 25 µg per lane.  
Blocking buffer: 3% nonfat dry milk in TBST.  
Detection: ECL Basic Kit (RM00020).  
Exposure time: 60s.



Confocal imaging of Neuro-2a cells using Integrin alpha 1/CD49a Rabbit mAb (A26489, dilution 1:200) followed by a further incubation with Cy3 Goat Anti-Rabbit IgG (H+L) (AS007, dilution 1:500) (Red). The cells were counterstained with α-Tubulin Mouse mAb (AC012, dilution 1:400) followed by incubation with ABflo® 488-conjugated Goat Anti-Mouse IgG (H+L) Ab (AS076, dilution 1:500) (Green). DAPI was used for nuclear staining (Blue). Objective: 100x.



Confocal imaging of paraffin-embedded Mouse lung tissue using Integrin alpha 1/CD49a Rabbit mAb (A26489, dilution 1:200) followed by a further incubation with Cy3 Goat Anti-Rabbit IgG (H+L) (AS007, dilution 1:500) (Red). DAPI was used for nuclear staining (Blue). High pressure antigen retrieval performed with 0.01M Citrate Buffer (pH 6.0) prior to IF staining. Objective: 40x.