

MYH6/MYH7 Rabbit mAb

Catalog No.: A26491 **Recombinant**

Basic Information

Observed MW

250kDa

Calculated MW

223kDa

Category

Primary antibody

Applications

WB,IF-P,ELISA

Cross-Reactivity

Human, Mouse, Rat

CloneNo number

ARC70361

Background

Cardiac muscle myosin is a hexamer consisting of two heavy chain subunits, two light chain subunits, and two regulatory subunits. This gene encodes the alpha heavy chain subunit of cardiac myosin. The gene is located approximately 4kb downstream of the gene encoding the beta heavy chain subunit of cardiac myosin. Mutations in this gene cause familial hypertrophic cardiomyopathy and atrial septal defect 3.

Recommended Dilutions

WB 1:10000 - 1:30000

IF-P 1:500 - 1:1000

ELISA Recommended starting concentration is 1 µg/mL. Please optimize the concentration based on your specific assay requirements.

Immunogen Information

Gene ID

4624/4625

Swiss Prot

P13533/P12883

Immunogen

Synthetic peptide. This information is considered to be commercially sensitive.

Synonyms

ASD3; MYHC; SSS3; CMH14; MYHCA; CMD1EE; alpha-MHC;CMH1; MPD1; SPMD; SPMM; CMD1S; MYHCB

Contact

 | 400-999-6126

 | cn.market@abclonal.com.cn

 | www.abclonal.com.cn

Product Information

Source

Rabbit

Isotype

IgG

Purification

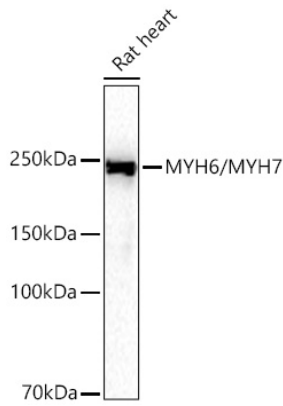
Affinity purification

Storage

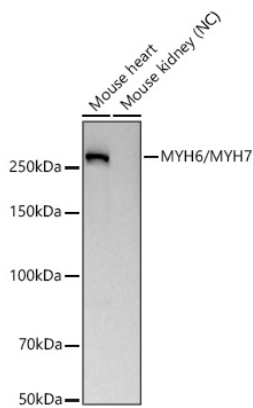
Store at -20°C. Avoid freeze / thaw cycles.

Buffer: PBS with 0.09% Sodium azide,0.05% BSA,50% glycerol,pH7.3.

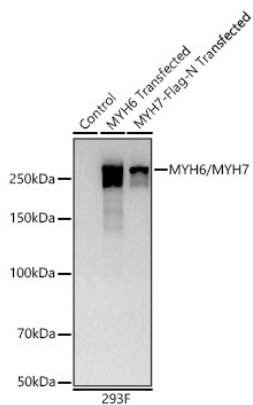
Validation Data



Western blot analysis of lysates from Rat heart using MYH6/MYH7 Rabbit mAb (A26491) at 1:5000 dilution incubated overnight at 4°C.
Secondary antibody: HRP-conjugated Goat anti-Rabbit IgG (H+L) (AS014) at 1:10000 dilution.
Lysates/proteins: 25 µg per lane.
Blocking buffer: 3% nonfat dry milk in TBST.
Detection: ECL Basic Kit (RM00020).
Exposure time: 20s.

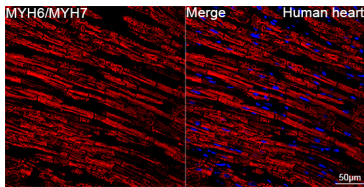


Western blot analysis of various lysates using MYH6/MYH7 Rabbit mAb (A26491) at 1:25000 dilution incubated overnight at 4°C.
Secondary antibody: HRP-conjugated Goat anti-Rabbit IgG (H+L) (AS014) at 1:10000 dilution.
Lysates/proteins: 25 µg per lane.
Blocking buffer: 3% nonfat dry milk in TBST.
Detection: ECL Basic Kit (RM00020).
Negative control (NC): Mouse kidney
Exposure time: 30s.

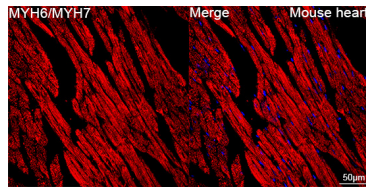


Western blot analysis of lysates from wild type (WT) and 293F cells transfected with MYH6/MYH7 using MYH6/MYH7 Rabbit mAb (A26491) at 1:25000 dilution incubated overnight at 4°C.
Secondary antibody: HRP-conjugated Goat anti-Rabbit IgG (H+L) (AS014) at 1:10000 dilution.
Lysates/proteins: 20 µg per lane.
Blocking buffer: 3% nonfat dry milk in TBST.
Detection: ECL Basic Kit (RM00020).
Exposure time: 30s.

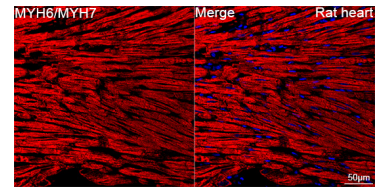
Validation Data



Confocal imaging of paraffin-embedded Human heart tissue using MYH6/MYH7 Rabbit mAb (A26491, dilution 1:800) followed by a further incubation with Cy3 Goat Anti-Rabbit IgG (H+L) (AS007, dilution 1:500) (Red). DAPI was used for nuclear staining (Blue). High pressure antigen retrieval performed with 0.01M Citrate Buffer(pH 6.0) prior to IF staining. Objective: 40x.



Confocal imaging of paraffin-embedded Mouse heart tissue using MYH6/MYH7 Rabbit mAb (A26491, dilution 1:800) followed by a further incubation with Cy3 Goat Anti-Rabbit IgG (H+L) (AS007, dilution 1:500) (Red). DAPI was used for nuclear staining (Blue). High pressure antigen retrieval performed with 0.01M Citrate Buffer(pH 6.0) prior to IF staining. Objective: 40x.



Confocal imaging of paraffin-embedded Rat heart tissue using MYH6/MYH7 Rabbit mAb (A26491, dilution 1:800) followed by a further incubation with Cy3 Goat Anti-Rabbit IgG (H+L) (AS007, dilution 1:500) (Red). DAPI was used for nuclear staining (Blue). High pressure antigen retrieval performed with 0.01M Citrate Buffer(pH 6.0) prior to IF staining. Objective: 40x.