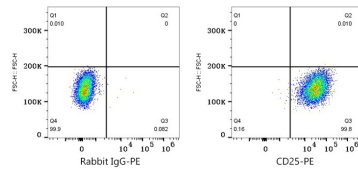
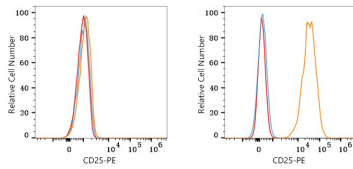


Validation Data



Flow cytometry: 1×10^6 C2C12 cells (negative control, left) and CTLL-2 cells (right) were surface-stained with PE Rabbit anti-Mouse CD25 mAb (A26508, 5 μ l/Test, orange line) or PE Rabbit IgG isotype control (A24172, 5 μ l/Test, blue line). Non-fluorescently stained cells were used as blank control (red line).

Flow cytometry: 1×10^6 CTLL-2 cells were surface-stained with PE Rabbit IgG isotype control (A24172, 5 μ l/Test, left) or PE Rabbit anti-Mouse CD25 mAb (A26508, 5 μ l/Test, right).