

# PE Rabbit anti-Human Siglec-8 mAb

Catalog No.: A26516

## Basic Information

### Observed MW

### Calculated MW

44kDa/46kDa/54kDa

### Category

Primary antibody

### Applications

FC

### Cross-Reactivity

Human

### CloneNo number

ARC52422-PE

### Conjugate

PE. Ex:565nm. Em:574nm.

## Recommended Dilutions

FC 5  $\mu$ l per  $10^6$  cells in  
100  $\mu$ l volume

## Background

Sialic acid-binding immunoglobulin (Ig)-like lectins, or SIGLECs (e.g., CD33 (MIM 159590)), are a family of type 1 transmembrane proteins each having a unique expression pattern, mostly in hemopoietic cells. SIGLEC8 is a member of the CD33-like subgroup of SIGLECs, which are localized to 19q13.3-q13.4 and have 2 conserved cytoplasmic tyrosine-based motifs: an immunoreceptor tyrosine-based inhibitory motif, or ITIM (see MIM 604964), and a motif homologous to one identified in signaling lymphocyte activation molecule (SLAM; MIM 603492) that mediates an association with SLAM-associated protein (SAP; MIM 300490) (summarized by Foussias et al., 2000 [PubMed 11095983]).

## Immunogen Information

### Gene ID

27181

### Swiss Prot

Q9NYZ4

### Immunogen

Recombinant fusion protein containing a sequence corresponding to amino acids 17-363 of human Siglec-8(NP\_055257.2).

### Synonyms

SAF2; SIGLEC-8; SIGLEC8L

## Contact

☎ | 400-999-6126

✉ | [cn.market@abclonal.com.cn](mailto:cn.market@abclonal.com.cn)

🌐 | [www.abclonal.com.cn](http://www.abclonal.com.cn)

## Product Information

### Source

Rabbit

### Isotype

IgG

### Purification

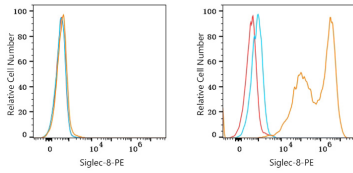
Affinity purification

### Storage

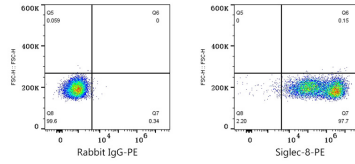
Store at 2-8°C. Avoid freeze.

Buffer: PBS with 0.09% Sodium azide, 0.2% BSA, pH7.3.

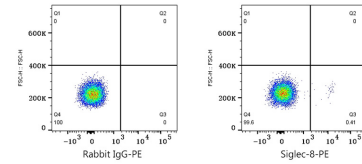
## Validation Data



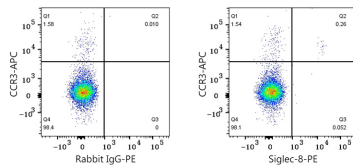
Flow cytometry:  $1 \times 10^6$  293F cells (negative control, left) and 293F (Transfection, right) cells were surface-stained with PE Rabbit anti-Human Siglec-8 mAb (A26516, 5  $\mu$ l/Test, orange line) or PE Rabbit IgG isotype control (A24172, 5  $\mu$ l/Test, blue line). Non-fluorescently stained cells were used as blank control (red line).



Flow cytometry:  $1 \times 10^6$  293F (Transfection) cells were surface-stained with PE Rabbit IgG isotype control (A24172, 5  $\mu$ l/Test, left) or PE Rabbit anti-Human Siglec-8 mAb (A26516, 5  $\mu$ l/Test, right).



Flow cytometry:  $1 \times 10^6$  Human peripheral blood granulocytes were surface-stained with PE Rabbit IgG isotype control (A24172, 5  $\mu$ l/Test, left) or PE Rabbit anti-Human Siglec-8 mAb (A26516, 5  $\mu$ l/Test, right).



Flow cytometry:  $1 \times 10^6$  Human peripheral blood granulocytes were surface-stained with PE Rabbit anti-Human Siglec-8 mAb (A26516, 5  $\mu$ l/Test) and PE Rabbit IgG isotype control (A24172, 5  $\mu$ l/Test, left) or APC Mouse anti-Human CCR3 mAb (5  $\mu$ l/Test, right).