

# PE Rabbit anti-Human CD39/ENTPD1 mAb

Catalog No.: A26520

## Basic Information

### Observed MW

### Calculated MW

34kDa/42kDa/46kDa/57kDa/58kDa/59kDa

### Category

Primary antibody

### Applications

FC

### Cross-Reactivity

Human

### CloneNo number

ARC64460

### Conjugate

PE. Ex:565nm. Em:574nm.

## Recommended Dilutions

FC 5  $\mu$ l per  $10^6$  cells in  
100  $\mu$ l volume

## Background

The protein encoded by this gene is a plasma membrane protein that hydrolyzes extracellular ATP and ADP to AMP. Inhibition of this protein's activity may confer anticancer benefits. Several transcript variants encoding different isoforms have been found for this gene.

## Immunogen Information

### Gene ID

953

### Swiss Prot

P49961

### Immunogen

Recombinant protein (or fragment). This information is considered to be commercially sensitive.


### Synonyms

CD39; SPG64; ATPDase; NTPDase-1

## Contact

 | 400-999-6126

 | [cn.market@abclonal.com.cn](mailto:cn.market@abclonal.com.cn)

 | [www.abclonal.com.cn](http://www.abclonal.com.cn)

## Product Information

### Source

Rabbit

### Isotype

IgG

### Purification

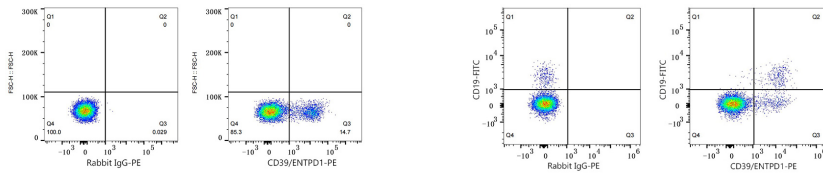
Affinity purification

### Storage

Store at 2-8°C. Avoid freeze.

Buffer: PBS with 0.09% Sodium azide, 0.2% BSA, pH7.3.

## Validation Data



Flow cytometry:  $1 \times 10^6$  Human PBMC were surface-stained with PE Rabbit IgG isotype control (A24172, 5  $\mu$ l/Test, left) or PE Rabbit anti-Human CD39/ENTPD1 mAb (A26520, 5  $\mu$ l/Test, right). Cells in the lymphocytes gate were used for analysis.

Flow cytometry:  $1 \times 10^6$  Human PBMC were surface-stained with FITC Mouse anti-Human CD19 mAb (A22815, 5  $\mu$ l/Test) and PE Rabbit IgG isotype control (A24172, 5  $\mu$ l/Test, left) or PE Rabbit anti-Human CD39/ENTPD1 mAb (A26520, 5  $\mu$ l/Test, right). Cells in the lymphocytes gate were used for analysis.