

ABflo® 450 Rabbit anti-Human CD4 mAb

Catalog No.: A26523

Basic Information

Observed MW

Calculated MW

51kDa

Category

Primary antibody

Applications

FC

Cross-Reactivity

Human

CloneNo number

ARC5142-01-ABf450

Conjugate

ABflo® 450. Ex:406nm. Em:445nm.

Recommended Dilutions

FC 5 µl per 10⁶ cells in
100 µl volume

Background

This gene encodes the CD4 membrane glycoprotein of T lymphocytes. The CD4 antigen acts as a coreceptor with the T-cell receptor on the T lymphocyte to recognize antigens displayed by an antigen presenting cell in the context of class II MHC molecules. The CD4 antigen is also a primary receptor for entry of the human immunodeficiency virus through interactions with the HIV Env gp120 subunit. This gene is expressed not only in T lymphocytes, but also in B cells, macrophages, granulocytes, as well as in various regions of the brain. The protein functions to initiate or augment the early phase of T-cell activation, and may function as an important mediator of indirect neuronal damage in infectious and immune-mediated diseases of the central nervous system. Multiple alternatively spliced transcript variants encoding different isoforms have been identified in this gene.

Immunogen Information

Gene ID

920

Swiss Prot

P01730

Immunogen

Recombinant protein of human CD4.

Synonyms

T4; IMD79; Leu-3; OKT4D; CD4mut

Contact

☎ | 400-999-6126

✉ | cn.market@abclonal.com.cn

🌐 | www.abclonal.com.cn

Product Information

Source

Rabbit

Isotype

IgG

Purification

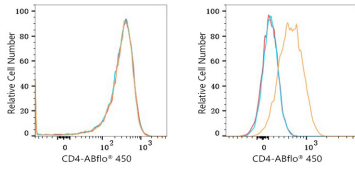
Affinity purification

Storage

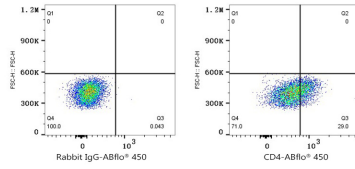
Store at 2-8°C. Avoid freeze.

Buffer: PBS with 0.09% Sodium azide, 0.2% BSA, pH7.3.

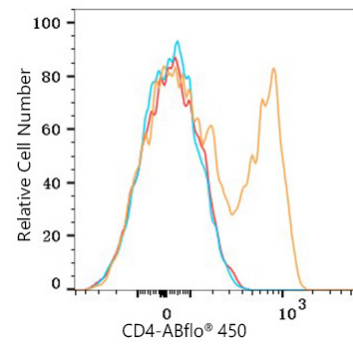
Validation Data



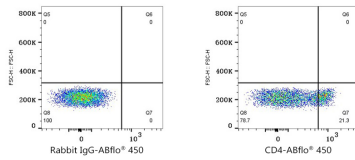
Flow cytometry: 1×10^6 PC-3 cells (negative control, left) and THP-1 cells (right) were surface-stained with ABflo® 450 Rabbit anti-Human CD4 mAb (A26523, $5 \mu\text{l}/\text{Test}$, orange line) or ($5 \mu\text{l}/\text{Test}$, blue line). Non-fluorescently stained cells were used as blank control (red line).



Flow cytometry: 1×10^6 THP-1 cells were surface-stained with ($5 \mu\text{l}/\text{Test}$, left) or ABflo® 450 Rabbit anti-Human CD4 mAb (A26523, $5 \mu\text{l}/\text{Test}$, right).



Flow cytometry: 1×10^6 Human PBMC were surface-stained with ABflo® 450 Rabbit anti-Human CD4 mAb (A26523, $5 \mu\text{l}/\text{Test}$, orange line) or ABflo® 450 Rabbit IgG isotype control ($5 \mu\text{l}/\text{Test}$, blue line). Non-fluorescently stained cells were used as blank control (red line).



Flow cytometry: 1×10^6 Human PBMC were surface-stained with ABflo® 450 Rabbit IgG isotype control ($5 \mu\text{l}/\text{Test}$, left) or ABflo® 450 Rabbit anti-Human CD4 mAb (A26523, $5 \mu\text{l}/\text{Test}$, right). Cells in the Monocyte gate were used for analysis.