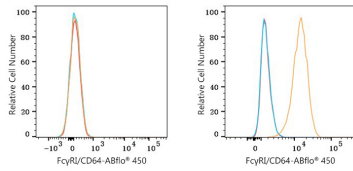
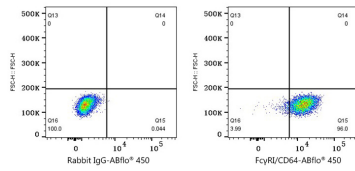




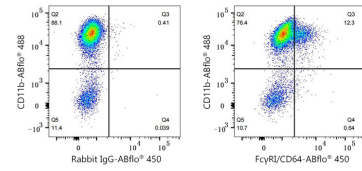
## Validation Data



Flow cytometry:  $1 \times 10^6$  BALB/C mouse splenocytes (negative control, left) and RAW 264.7 cells (right) were surface-stained with ABflo® 450 Rabbit anti-Mouse FcγRI/CD64 mAb (A26525, 5 μl/Test, orange line) or ABflo® 450 Rabbit IgG isotype control (5 μl/Test, blue line). Non-fluorescently stained cells were used as blank control (red line).



Flow cytometry:  $1 \times 10^6$  RAW 264.7 cells were surface-stained with ABflo® 450 Rabbit IgG isotype control (5 μl/Test, left) or ABflo® 450 Rabbit anti-Mouse FcγRI/CD64 mAb (A26525, 5 μl/Test, right).



Flow cytometry:  $1 \times 10^6$  C57BL/6 mouse bone marrow cells were surface-stained with ABflo® 488 Rabbit anti-Mouse CD11b mAb (A24094, 5 μl/Test) and ABflo® 450 Rabbit IgG isotype control (A27451, 5 μl/Test, left) or ABflo® 450 Rabbit anti-Mouse FcγRI/CD64 mAb (A26525, 5 μl/Test, right). Cells in the monocyte gate were used for analysis.