

# ABflo® 610 Rabbit anti-Mouse CD64/FcγRI mAb

Catalog No.: A26526

## Basic Information

### Observed MW

Refer to figures

### Calculated MW

44kDa

### Category

Primary antibody

### Applications

FC

### Cross-Reactivity

Mouse

### CloneNo number

ARC61141

### Conjugate

ABflo® 610. Ex:421nm. Em:612nm.

## Recommended Dilutions

**FC** 5 μl per 10<sup>6</sup> cells in  
100 μl volume

## Background

Enables IgG binding activity and IgG receptor activity. Acts upstream of or within several processes, including antibody-dependent cellular cytotoxicity; endocytosis; and positive regulation of hypersensitivity. Located in external side of plasma membrane. Is expressed in liver. Orthologous to several human genes including FCGR1A (Fc gamma receptor 1a).

## Immunogen Information

### Gene ID

14129

### Swiss Prot

P26151

### Immunogen

Recombinant protein (or fragment). This information is considered to be commercially sensitive.


### Synonyms

CD64; IGGHAFc; FcγRI

## Contact

 | 400-999-6126

 | [cn.market@abclonal.com.cn](mailto:cn.market@abclonal.com.cn)

 | [www.abclonal.com.cn](http://www.abclonal.com.cn)

## Product Information

### Source

Rabbit

### Isotype

IgG

### Purification

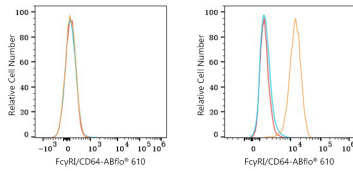
Affinity purification

### Storage

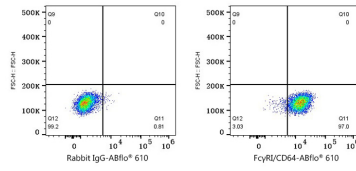
Store at 2-8°C. Avoid freeze.

Buffer: PBS with 0.09% Sodium azide, 0.2% BSA, pH7.3.

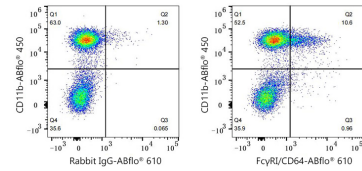
## Validation Data



Flow cytometry:  $1 \times 10^6$  BALB/C mouse splenocytes (negative control, left) and RAW 264.7 cells (right) were surface-stained with ABflo® 610 Rabbit anti-Mouse Fc $\gamma$ RI/CD64 mAb (A26526,5  $\mu$ l/Test, orange line) or ABflo® 610 Rabbit IgG isotype control (A25826,5  $\mu$ l/Test, blue line). Non-fluorescently stained cells were used as blank control (red line).



Flow cytometry:  $1 \times 10^6$  RAW 264.7 cells were surface-stained with ABflo® 610 Rabbit IgG isotype control (A25826,5  $\mu$ l/Test, left) or ABflo® 610 Rabbit anti-Mouse Fc $\gamma$ RI/CD64 mAb (A26526,5  $\mu$ l/Test, right).



Flow cytometry:  $1 \times 10^6$  C57BL/6 mouse bone marrow cells were surface-stained with ABflo® 450 Rabbit anti-Mouse CD11b mAb (A26229,5  $\mu$ l/Test) and ABflo® 610 Rabbit IgG isotype control (A25826,5  $\mu$ l/Test, left) or ABflo® 610 Rabbit anti-Mouse Fc $\gamma$ RI/CD64 mAb (A26526,5  $\mu$ l/Test, right). Cells in the monocyte gate were used for analysis.