

ABflo® 700 Rabbit anti-Mouse CD64/FcγRI mAb

Catalog No.: A26527

Basic Information

Observed MW

Refer to figures

Calculated MW

44kDa

Category

Primary antibody

Applications

FC

Cross-Reactivity

Mouse

CloneNo number

ARC61141

Conjugate

ABflo® 700. Ex:690nm. Em:713nm.

Recommended Dilutions

FC 5 μl per 10⁶ cells in
100 μl volume

Background

Enables IgG binding activity and IgG receptor activity. Acts upstream of or within several processes, including antibody-dependent cellular cytotoxicity; endocytosis; and positive regulation of hypersensitivity. Located in external side of plasma membrane. Is expressed in liver. Orthologous to several human genes including FCGR1A (Fc gamma receptor 1a).

Immunogen Information

Gene ID

14129

Swiss Prot

P26151

Immunogen

Recombinant protein (or fragment). This information is considered to be commercially sensitive.

Synonyms

CD64; IGGHAFC; FcγRI

Contact

 | 400-999-6126

 | cn.market@abclonal.com.cn

 | www.abclonal.com.cn

Product Information

Source

Rabbit

Isotype

IgG

Purification

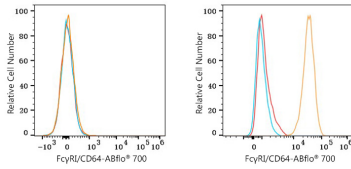
Affinity purification

Storage

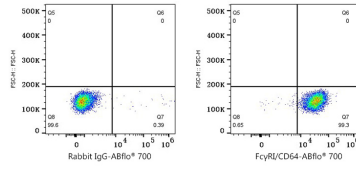
Store at 2-8°C. Avoid freeze.

Buffer: PBS with 0.09% Sodium azide, 0.2% BSA, pH7.3.

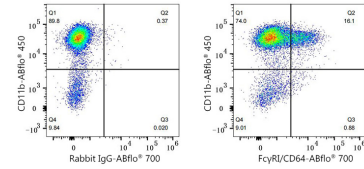
Validation Data



Flow cytometry: 1×10^6 BALB/C mouse splenocytes (negative control, left) and RAW 264.7 cells (right) were surface-stained with ABflo® 700 Rabbit anti-Mouse FcγRI/CD64 mAb (A26527,5 μl/Test, orange line) or ABflo® 700 Rabbit IgG isotype control (A26479,5 μl/Test, blue line). Non-fluorescently stained cells were used as blank control (red line).



Flow cytometry: 1×10^6 RAW 264.7 cells were surface-stained with ABflo® 700 Rabbit IgG isotype control (A26479,5 μl/Test, left) or ABflo® 700 Rabbit anti-Mouse FcγRI/CD64 mAb (A26527,5 μl/Test, right).



Flow cytometry: 1×10^6 C57BL/6 bone marrow cells were surface-stained with ABflo® 450 Rabbit anti-Mouse CD11b mAb (A26229,5 μl/Test) and ABflo® 700 Rabbit IgG isotype control (A25976,5 μl/Test, left) or ABflo® 700 Rabbit anti-Mouse FcγRI/CD64 mAb (A26527,5 μl/Test, right). Cells in the monocyte gate were used for analysis.