

# ABflo® 700 Rabbit anti-Mouse CD2 mAb

Catalog No.: A26528

## Basic Information

### Observed MW

### Calculated MW

38kDa

### Category

Primary antibody

### Applications

FC

### Cross-Reactivity

Mouse

### CloneNo number

ARC60614

### Conjugate

ABflo® 700. Ex:690nm. Em:713nm.

## Recommended Dilutions

FC 5 µl per 10<sup>6</sup> cells in  
100 µl volume

## Background

Enables identical protein binding activity. Predicted to be involved in T cell activation; heterotypic cell-cell adhesion; and positive regulation of cytokine production. Located in several cellular components, including cell-cell junction; cytoplasmic side of plasma membrane; and external side of plasma membrane. Is anchored component of plasma membrane. Is expressed in several structures, including alimentary system; central nervous system; genitourinary system; hemolymphoid system gland; and liver and biliary system. Orthologous to human CD2 (CD2 molecule).

## Immunogen Information

### Gene ID

12481

### Swiss Prot

P08920

### Immunogen

Recombinant protein (or fragment). This information is considered to be commercially sensitive.

### Synonyms

Ly37; LFA-2; Ly-37

## Contact

☎ | 400-999-6126

✉ | [cn.market@abclonal.com.cn](mailto:cn.market@abclonal.com.cn)

🌐 | [www.abclonal.com.cn](http://www.abclonal.com.cn)

## Product Information

### Source

Rabbit

### Isotype

IgG

### Purification

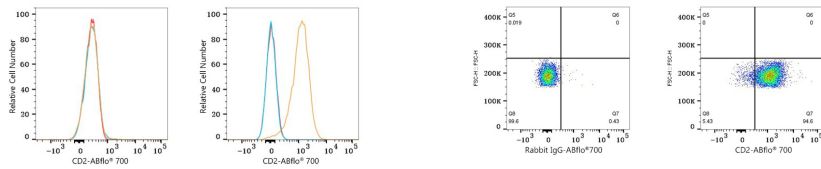
Affinity purification

### Storage

Store at 2-8°C. Avoid freeze.

Buffer: PBS with 0.09% Sodium azide, 0.2% BSA, pH7.3.

## Validation Data



Flow cytometry:  $1 \times 10^6$  4T1 cells (negative control, left) and BALB/C splenocytes (right) were surface-stained with ABflo® 700 Rabbit anti-Mouse CD2 mAb (A26528, 5  $\mu$ l/Test, orange line) or ABflo® 700 Rabbit IgG isotype control (A25976, 5  $\mu$ l/Test, blue line). Non-fluorescently stained cells were used as blank control (red line).

Flow cytometry:  $1 \times 10^6$  BALB/C mouse splenocytes were surface-stained with ABflo® 700 Rabbit IgG isotype control (A25976, 5  $\mu$ l/Test, left) or ABflo® 700 Rabbit anti-Mouse CD2 mAb (A26528, 5  $\mu$ l/Test, right).