

# CD304/Neuropilin-1 Rabbit PolymAb®

Catalog No.: A26530

## Basic Information

### Observed MW

130-140kDa

### Calculated MW

103kDa

### Category

Primary antibody

### Applications

WB,IF/ICC,ELISA

### Cross-Reactivity

Human, Mouse, Rat

## Background

Enables protein kinase binding activity; transmembrane signaling receptor activity; and vascular endothelial growth factor binding activity. Involved in several processes, including nervous system development; regulation of signal transduction; and vasculature development. Acts upstream of or within several processes, including morphogenesis of a branching epithelium; nervous system development; and toxin transport. Located in several cellular components, including endosome; focal adhesion; and neurofilament. Is integral component of postsynaptic membrane. Is expressed in several structures, including cardiovascular system; jaw; lung; nervous system; and sensory organ. Used to study retinal vein occlusion. Human ortholog(s) of this gene implicated in lung non-small cell carcinoma. Orthologous to human NRP1 (neuropilin 1).

## Recommended Dilutions

**WB** 1:500 - 1:1000

**IF/ICC** 1:200 - 1:800

**ELISA** Recommended starting concentration is 1 µg/mL. Please optimize the concentration based on your specific assay requirements.

## Immunogen Information

### Gene ID

18186

### Swiss Prot

P97333

### Immunogen

Recombinant protein of mouse CD304/Neuropilin-1.

### Synonyms

Nrp; NP-1; Npn1; NPN-1; C530029I03

## Contact

☎ | 400-999-6126

✉ | [cn.market@abclonal.com.cn](mailto:cn.market@abclonal.com.cn)

🌐 | [www.abclonal.com.cn](http://www.abclonal.com.cn)

## Product Information

### Source

Rabbit

### Isotype

IgG

### Purification

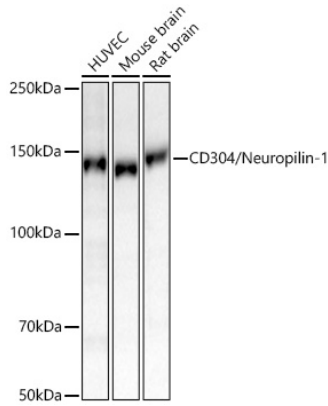
Affinity purification

### Storage

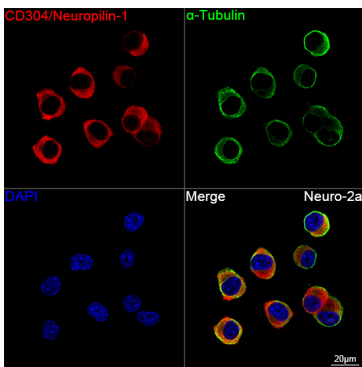
Store at -20°C. Avoid freeze / thaw cycles.

Buffer: PBS with 0.09% Sodium azide,0.05% BSA,50% glycerol,pH7.3.

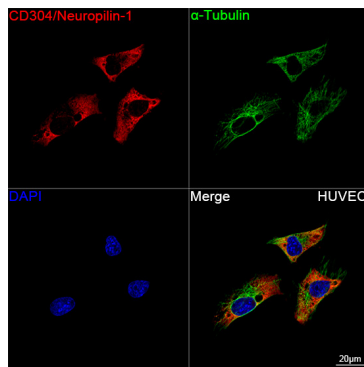
## Validation Data



Western blot analysis of various lysates using CD304/Neuropilin-1 Rabbit PolymAb® (A26530) at 1:1000 dilution incubated overnight at 4°C. Secondary antibody: HRP-conjugated Goat anti-Rabbit IgG (H+L) (AS014) at 1:10000 dilution. Lysates/proteins: 25 µg per lane. Blocking buffer: 3% nonfat dry milk in TBST. Detection: ECL Basic Kit (RM00020). Exposure time: 90s.



Confocal imaging of Neuro-2a cells using CD304/Neuropilin-1 Rabbit PolymAb® (A26530, dilution 1:200) followed by a further incubation with Cy3 Goat Anti-Rabbit IgG (H+L) (AS007, dilution 1:500) (Red). DAPI was used for nuclear staining (Blue). Objective: 100x.



Confocal imaging of HUVEC cells using CD304/Neuropilin-1 Rabbit PolymAb® (A26530, dilution 1:200) followed by a further incubation with Cy3 Goat Anti-Rabbit IgG (H+L) (AS007, dilution 1:500) (Red). DAPI was used for nuclear staining (Blue). Objective: 100x.