

# PE Rabbit anti-Human CD11a mAb

**Catalog No.: A26540**

## Basic Information

### Observed MW

### Calculated MW

118kDa/129kDa/134kDa

### Category

Primary antibody

### Applications

FC

### Cross-Reactivity

Human

### CloneNo number

ARC62732-PE

### Conjugate

PE. Ex:565nm. Em:574nm.

## Background

ITGAL encodes the integrin alpha L chain. Integrins are heterodimeric integral membrane proteins composed of an alpha chain and a beta chain. This I-domain containing alpha integrin combines with the beta 2 chain (ITGB2) to form the integrin lymphocyte function-associated antigen-1 (LFA-1), which is expressed on all leukocytes. LFA-1 plays a central role in leukocyte intercellular adhesion through interactions with its ligands, ICAMs 1-3 (intercellular adhesion molecules 1 through 3), and also functions in lymphocyte costimulatory signaling. Two transcript variants encoding different isoforms have been found for this gene.

## Recommended Dilutions

**FC** 5  $\mu$ l per  $10^6$  cells in  
100  $\mu$ l volume

## Immunogen Information

### Gene ID

3683

### Swiss Prot

P20701

### Immunogen

Recombinant fusion protein containing a sequence corresponding to amino acids 26-340 of human CD11a (NP\_002200.2).

### Synonyms

CD11A; LFA-1; LFA1A

## Contact

 | 400-999-6126

 | [cn.market@abclonal.com.cn](mailto:cn.market@abclonal.com.cn)

 | [www.abclonal.com.cn](http://www.abclonal.com.cn)

## Product Information

### Source

Rabbit

### Isotype

IgG

### Purification

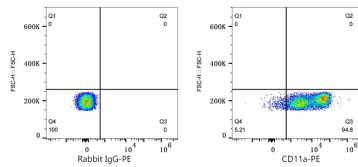
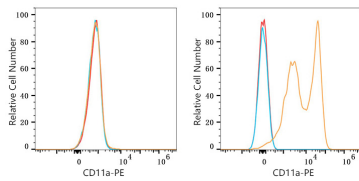
Affinity purification

### Storage

Store at 2-8°C. Avoid freeze.

Buffer: PBS with 0.09% Sodium azide, 0.2% BSA, pH7.3.

## Validation Data



Flow cytometry:  $1 \times 10^6$  K-562 cells (negative control, left) and Human PBMC (right) were surface-stained with PE Rabbit anti-Human CD11a mAb (A26540, 5  $\mu\text{l}/\text{Test}$ , orange line) or PE Rabbit IgG isotype control (A24172, 5  $\mu\text{l}/\text{Test}$ , blue line). Non-fluorescently stained cells were used as blank control (red line).

Flow cytometry:  $1 \times 10^6$  Human PBMC were surface-stained with PE Rabbit IgG isotype control (A24172, 5  $\mu\text{l}/\text{Test}$ , left) or PE Rabbit anti-Human CD11a mAb (A26540, 5  $\mu\text{l}/\text{Test}$ , right).