

PerCP Rabbit anti-Mouse CD209b/DC-SIGNR1 mAb

Catalog No.: A26547

Basic Information

Observed MW

Refer to figures

Calculated MW

16kDa/33kDa/36kDa/37kDa

Category

Primary antibody

Applications

FC

Cross-Reactivity

Mouse

CloneNo number

ARC69315-PerCP

Conjugate

PerCP. Ex:482nm. Em:678nm.

Recommended Dilutions

FC 5 μ l per 10^6 cells in
100 μ l volume

Background

CD209B, also known as SIGN-R1, is a mouse C-type lectin receptor predominantly expressed on macrophages in the spleen marginal zone and lymph nodes medulla. CD209B is a mouse homolog of human CD209/DC-SIGN and is involved in innate immune response. CD209B mediates the recognition and uptake of pathogen products, such as lipopolysaccharides (LPS), pneumococcal polysaccharides, and dextrans. CD209B has been demonstrated to facilitate the clearance of encapsulated pneumococcus by directly binding to C1q and activating complement through an immunoglobulin independent pathway.

Immunogen Information

Gene ID

69165

Swiss Prot

Q8CJ91

Immunogen

Recombinant fusion protein containing a sequence corresponding to amino acids 76-325 of mouse CD209b/DC-SIGNR1 (NP_081248.4).

Synonyms

OtB7; SIGNR1; mSIGNR1; DC-SIGNR1; 1810030I22Rik

Contact

☎ | 400-999-6126

✉ | cn.market@abclonal.com.cn

🌐 | www.abclonal.com.cn

Product Information

Source

Rabbit

Isotype

IgG

Purification

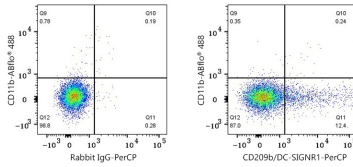
Affinity purification

Storage

Store at 2-8°C. Avoid freeze.

Buffer: PBS with 0.09% Sodium azide, 0.2% BSA, pH7.3.

Validation Data



Flow cytometry: 1X10⁶ C57BL/6 mouse splenocytes were surface-stained with ABflo® 488 Rabbit anti-Mouse CD11b mAb (A24094, 5 µl/Test) and PerCP Rabbit IgG isotype control (A24204, 5 µl/Test, left) or PerCP Rabbit anti-Mouse CD209b/DC-SIGNR1 mAb (A26547, 5 µl/Test, right). Cells in the Monocytes gate were used for analysis.