

ABflo® 647 Rabbit anti-Mouse CD209b/DC-SIGNR1 mAb www.abclonal.com

Catalog No.: A26548

Basic Information

Observed MW

Refer to figures

Calculated MW

16kDa/33kDa/36kDa/37kDa

Category

Primary antibody

Applications

FC

Cross-Reactivity

Mouse

CloneNo number

ARC69315

Conjugate

ABflo® 647. Ex:648nm. Em:664nm.

Recommended Dilutions

FC 5 µl per 10⁶ cells in
 100 µl volume

Background

CD209B, also known as SIGN-R1, is a mouse C-type lectin receptor predominantly expressed on macrophages in the spleen marginal zone and lymph nodes medulla. CD209B is a mouse homolog of human CD209/DC-SIGN and is involved in innate immune response. CD209B mediates the recognition and uptake of pathogen products, such as lipopolysaccharides (LPS), pneumococcal polysaccharides, and dextrans. CD209B has been demonstrated to facilitate the clearance of encapsulated pneumococcus by directly binding to C1q and activating complement through an immunoglobulin independent pathway.

Immunogen Information

Gene ID
69165

Swiss Prot
Q8CJ91

Immunogen

Recombinant protein (or fragment). This information is considered to be commercially sensitive.

Synonyms

OtB7; SIGNR1; mSIGNR1; DC-SIGNR1; 1810030I22Rik

Contact

☎ | 400-999-6126

✉ | cn.market@abclonal.com.cn

🌐 | www.abclonal.com.cn

Product Information

Source
Rabbit

Isotype
IgG

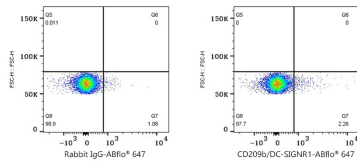
Purification
Affinity purification

Storage

Store at 2-8°C. Avoid freeze.

Buffer: PBS with 0.09% Sodium azide, 0.2% BSA, pH7.3.

Validation Data



Flow cytometry: 1×10^6 C57BL/6 mouse splenocytes were surface-stained with ABflo® 647 Rabbit IgG isotype control (A22070, 5 μ l/Test, left) or ABflo® 647 Rabbit anti-Mouse CD209b/DC-SIGNR1 mAb (A26548, 5 μ l/Test, right).