

ABflo® 700 Rabbit anti-Human CD152/CTLA-4 mAb

Catalog No.: A26551

Basic Information

Observed MW

Calculated MW

6kDa/8kDa/19kDa/24kDa

Category

Primary antibody

Applications

FC (intra)

Cross-Reactivity

Human

CloneNo number

ARC57384

Conjugate

ABflo® 700. Ex:690nm. Em:713nm.

Recommended Dilutions

FC (intra) 5 µl per 10⁶ cells in
100 µl volume

Background

This gene is a member of the immunoglobulin superfamily and encodes a protein which transmits an inhibitory signal to T cells. The protein contains a V domain, a transmembrane domain, and a cytoplasmic tail. Alternate transcriptional splice variants, encoding different isoforms, have been characterized. The membrane-bound isoform functions as a homodimer interconnected by a disulfide bond, while the soluble isoform functions as a monomer. Mutations in this gene have been associated with insulin-dependent diabetes mellitus, Graves disease, Hashimoto thyroiditis, celiac disease, systemic lupus erythematosus, thyroid-associated orbitopathy, and other autoimmune diseases.

Immunogen Information

Gene ID

1493

Swiss Prot

P16410

Immunogen

Recombinant protein (or fragment). This information is considered to be commercially sensitive.

Synonyms

CD; GSE; GRD4; ALPS5; CD152; CTLA-4; IDDM12; CELIAC3

Contact

☎ | 400-999-6126

✉ | cn.market@abclonal.com.cn

🌐 | www.abclonal.com.cn

Product Information

Source

Rabbit

Isotype

IgG

Purification

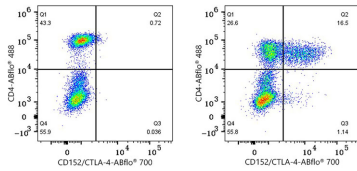
Affinity purification

Storage

Store at 2-8°C. Avoid freeze.

Buffer: PBS with 0.09% Sodium azide, 0.2% BSA, pH7.3.

Validation Data



Flow cytometry: 1×10^6 Human PBMC (untreated, left) and Human PBMC (stimulated with 50 ng/mL PMA and 1 µg/mL ionomycin for 6 hours, right) were surface-stained with ABflo® 488 Rabbit anti-Human/Monkey CD4 mAb (A22773, 5 µl/Test) and then intracellularly-stained with ABflo® 700 Rabbit anti-Human CD152/CTLA-4 mAb (A26551, 5 µl/Test).