

PE Rabbit anti-Mouse PD-L2/CD273/B7-DC mAb

Catalog No.: A26554

Basic Information

Observed MW

Calculated MW

28kDa

Category

Primary antibody

Applications

FC

Cross-Reactivity

Mouse

CloneNo number

ARC69814

Conjugate

PE. Ex:565nm. Em:574nm.

Background

Acts upstream of or within negative regulation of T cell proliferation and positive regulation of T cell proliferation. Predicted to be located in plasma membrane. Predicted to be integral component of membrane. Predicted to be active in external side of plasma membrane. Is expressed in several structures, including alimentary system epithelium; forebrain; nose; retina; and skin. Orthologous to human PDCD1LG2 (programmed cell death 1 ligand 2).

Recommended Dilutions

FC 5 μ l per 10^6 cells in
100 μ l volume

Immunogen Information

Gene ID

58205

Swiss Prot

Q9WUL5

Immunogen

Recombinant protein (or fragment). This information is considered to be commercially sensitive.

Synonyms

Btdc; B7-DC; PD-L2; F730015O22Rik

Contact

☎ | 400-999-6126

✉ | cn.market@abclonal.com.cn

🌐 | www.abclonal.com.cn

Product Information

Source

Rabbit

Isotype

IgG

Purification

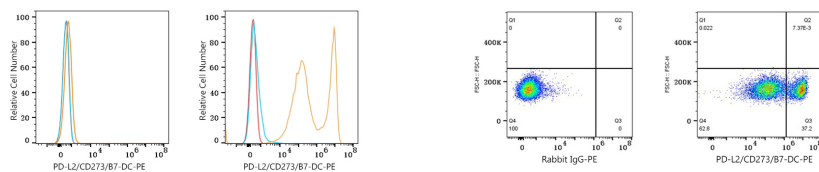
Affinity purification

Storage

Store at 2-8°C. Avoid freeze.

Buffer: PBS with 0.09% Sodium azide, 0.2% BSA, pH7.3.

Validation Data



Flow cytometry: 1×10^6 293T cells (negative control, left) and 293T (Transfection, right) cells were surface-stained with PE Rabbit anti-Mouse PD-L2/CD273/B7-DC mAb (A26554, 5 μ l/Test, orange line) or PE Rabbit IgG isotype control (A24172, 5 μ l/Test, blue line). Non-fluorescently stained cells were used as blank control (red line).

Flow cytometry: 1×10^6 293T (Transfection) cells were surface-stained with PE Rabbit IgG isotype control (A24172, 5 μ l/Test, left) or PE Rabbit anti-Mouse PD-L2/CD273/B7-DC mAb (A26554, 5 μ l/Test, right).