

ABflo® 488 Rabbit anti-Mouse PD-L2/CD273/B7-DC mAb

Catalog No.: A26555

Basic Information

Observed MW

Calculated MW

28kDa

Category

Primary antibody

Applications

FC

Cross-Reactivity

Mouse

CloneNo number

ARC69814-ABflo488

Conjugate

ABflo® 488. Ex:491nm. Em:516nm.

Recommended Dilutions

FC 5 µl per 10⁶ cells in
100 µl volume

Background

Acts upstream of or within negative regulation of T cell proliferation and positive regulation of T cell proliferation. Predicted to be located in plasma membrane. Predicted to be integral component of membrane. Predicted to be active in external side of plasma membrane. Is expressed in several structures, including alimentary system epithelium; forebrain; nose; retina; and skin. Orthologous to human PDCD1LG2 (programmed cell death 1 ligand 2).

Immunogen Information

Gene ID

58205

Swiss Prot

Q9WUL5

Immunogen

Recombinant fusion protein containing a sequence corresponding to amino acids 20-123 of mouse PD-L2/CD273/B7-DC (NP_067371.1).

Synonyms

Btdc; B7-DC; PD-L2; F730015O22Rik

Contact

☎ | 400-999-6126

✉ | cn.market@abclonal.com.cn

🌐 | www.abclonal.com.cn

Product Information

Source

Rabbit

Isotype

IgG

Purification

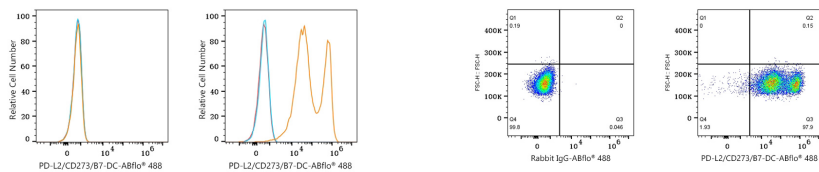
Affinity purification

Storage

Store at 2-8°C. Avoid freeze.

Buffer: PBS with 0.09% Sodium azide, 0.2% BSA, pH7.3.

Validation Data



Flow cytometry: 1×10^6 293T cells (negative control, left) and 293T (Transfection, right) cells were surface-stained with ABflo® 488 Rabbit anti-Mouse PD-L2/CD273/B7-DC mAb (A26555,5 μ l/Test, orange line) or ABflo® 488 Rabbit IgG isotype control (A22069,5 μ l/Test, blue line). Non-fluorescently stained cells were used as blank control (red line).

Flow cytometry: 1×10^6 293T (Transfection) cells were surface-stained with ABflo® 488 Rabbit IgG isotype control (A22069,5 μ l/Test, left) or ABflo® 488 Rabbit anti-Mouse PD-L2/CD273/B7-DC mAb (A26555,5 μ l/Test, right).