

ABflo® 488 Rabbit anti-Mouse Integrin alpha 2/CD49b mAb

Catalog No.: A26559

Basic Information

Observed MW

Calculated MW

129kDa

Category

Primary antibody

Applications

FC

Cross-Reactivity

Mouse

CloneNo number

ARC69348-ABflo488

Conjugate

ABflo® 488. Ex:491nm. Em:516nm.

Recommended Dilutions

FC 5 µl per 10⁶ cells in
100 µl volume

Background

Enables amyloid-beta binding activity. Predicted to be involved in several processes, including cell surface receptor signaling pathway; positive regulation of cell migration; and positive regulation of cellular component organization. Predicted to act upstream of or within cell adhesion. Located in basal part of cell and external side of plasma membrane. Is expressed in several structures, including alimentary system; brain; cardiovascular system; eye; and genitourinary system. Human ortholog(s) of this gene implicated in several diseases, including Behcet's disease; artery disease (multiple); blood platelet disease (multiple); diabetes mellitus (multiple); and von Willebrand's disease (multiple). Orthologous to human ITGA2 (integrin subunit alpha 2).

Immunogen Information

Gene ID

16398

Swiss Prot

Q62469

Immunogen

Recombinant fusion protein containing a sequence corresponding to amino acids 168-366 of mouse Integrin alpha 2/CD49b (NP_032422.2).

Synonyms

DX5; GPIa; CD49B

Contact

☎ | 400-999-6126

✉ | cn.market@abclonal.com.cn

🌐 | www.abclonal.com.cn

Product Information

Source

Rabbit

Isotype

IgG

Purification

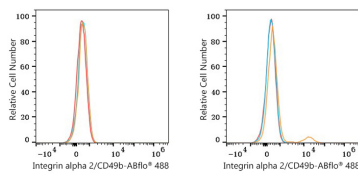
Affinity purification

Storage

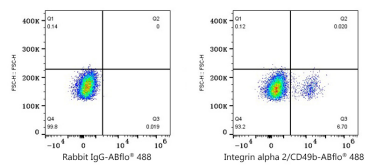
Store at 2-8°C. Avoid freeze.

Buffer: PBS with 0.09% Sodium azide, 0.2% BSA, pH7.3.

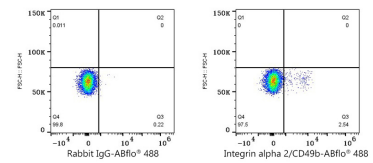
Validation Data



Flow cytometry: 1×10^6 293T cells (negative control, left) and 293T (Transfection, right) cells were surface-stained with ABflo® 488 Rabbit anti-Mouse Integrin alpha 2/CD49b mAb (A26559, 5 μ l/Test, orange line) or ABflo® 488 Rabbit IgG isotype control (A22069, 5 μ l/Test, blue line). Non-fluorescently stained cells were used as blank control (red line).



Flow cytometry: 1×10^6 293T (Transfection) cells were surface-stained with ABflo® 488 Rabbit IgG isotype control (A22069, 5 μ l/Test, left) or ABflo® 488 Rabbit anti-Mouse Integrin alpha 2/CD49b mAb (A26559, 5 μ l/Test, right).



Flow cytometry: 1×10^6 C57BL/6 mouse splenocytes were surface-stained with ABflo® 488 Rabbit IgG isotype control (A22069, 5 μ l/Test, left) or ABflo® 488 Rabbit anti-Mouse Integrin alpha 2/CD49b mAb (A26559, 5 μ l/Test, right).