

ABflo® 647 Rabbit anti-Mouse Integrin alpha 2/CD49b mAb

Catalog No.: A26560

Basic Information

Observed MW

Calculated MW
129kDa

Category
Primary antibody

Applications
FC

Cross-Reactivity
Mouse

CloneNo number
ARC69348-ABflo647

Conjugate
ABflo® 647. Ex:648nm. Em:664nm.

Recommended Dilutions

FC 5 µl per 10⁶ cells in
100 µl volume

Background

Enables amyloid-beta binding activity. Predicted to be involved in several processes, including cell surface receptor signaling pathway; positive regulation of cell migration; and positive regulation of cellular component organization. Predicted to act upstream of or within cell adhesion. Located in basal part of cell and external side of plasma membrane. Is expressed in several structures, including alimentary system; brain; cardiovascular system; eye; and genitourinary system. Human ortholog(s) of this gene implicated in several diseases, including Behcet's disease; artery disease (multiple); blood platelet disease (multiple); diabetes mellitus (multiple); and von Willebrand's disease (multiple). Orthologous to human ITGA2 (integrin subunit alpha 2).

Immunogen Information

Gene ID 16398	Swiss Prot Q62469
-------------------------	-----------------------------

Immunogen

Recombinant fusion protein containing a sequence corresponding to amino acids 168-366 of mouse Integrin alpha 2/CD49b (NP_032422.2).

Synonyms

DX5; GPIa; CD49B

Contact

☎ | 400-999-6126

✉ | cn.market@abclonal.com.cn

🌐 | www.abclonal.com.cn

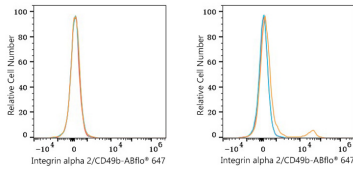
Product Information

Source Rabbit	Isotype IgG	Purification Affinity purification
-------------------------	-----------------------	--

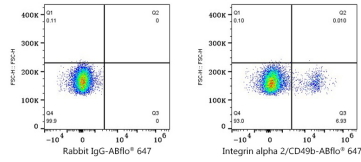
Storage

Store at 2-8°C. Avoid freeze.
Buffer: PBS with 0.09% Sodium azide, 0.2% BSA, pH7.3.

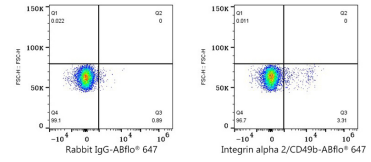
Validation Data



Flow cytometry: 1×10^6 293T cells (negative control, left) and 293T (Transfection, right) cells were surface-stained with ABflo® 647 Rabbit anti-Mouse Integrin alpha 2/CD49b mAb (A26560, 5 μ l/Test, orange line) or ABflo® 647 Rabbit IgG isotype control (A22070, 5 μ l/Test, blue line). Non-fluorescently stained cells were used as blank control (red line).



Flow cytometry: 1×10^6 293T (Transfection) cells were surface-stained with ABflo® 647 Rabbit IgG isotype control (A22070, 5 μ l/Test, left) or ABflo® 647 Rabbit anti-Mouse Integrin alpha 2/CD49b mAb (A26560, 5 μ l/Test, right).



Flow cytometry: 1×10^6 C57BL/6 mouse splenocytes were surface-stained with ABflo® 647 Rabbit IgG isotype control (A22070, 5 μ l/Test, left) or ABflo® 647 Rabbit anti-Mouse Integrin alpha 2/CD49b mAb (A26560, 5 μ l/Test, right).