

PE Rabbit anti-Human MRC2 mAb

Catalog No.: A26561

Basic Information

Observed MW

Calculated MW

167kDa

Category

Primary antibody

Applications

FC

Cross-Reactivity

Human

CloneNo number

ARC66230-PE

Conjugate

PE. Ex:565nm. Em:574nm.

Recommended Dilutions

FC 5 μ l per 10^6 cells in
100 μ l volume

Background

This gene encodes a member of the mannose receptor family of proteins that contain a fibronectin type II domain and multiple C-type lectin-like domains. The encoded protein plays a role in extracellular matrix remodeling by mediating the internalization and lysosomal degradation of collagen ligands. Expression of this gene may play a role in the tumorigenesis and metastasis of several malignancies including breast cancer, gliomas and metastatic bone disease.

Immunogen Information

Gene ID

9902

Swiss Prot

Q9UBG0

Immunogen

Recombinant fusion protein containing a sequence corresponding to amino acids 35-513 of human MRC2 (NP_006030.2).

Synonyms

CD280; UPARAP; CLEC13E; ENDO180

Contact

 | 400-999-6126

 | cn.market@abclonal.com.cn

 | www.abclonal.com.cn

Product Information

Source

Rabbit

Isotype

IgG

Purification

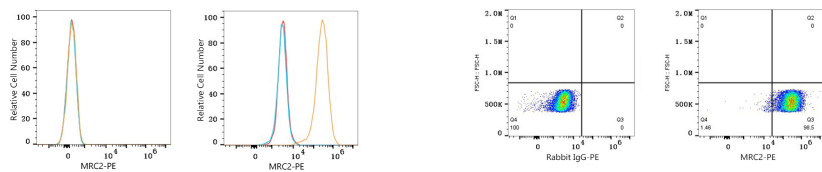
Affinity purification

Storage

Store at 2-8°C. Avoid freeze.

Buffer: PBS with 0.09% Sodium azide, 0.2% BSA, pH7.3.

Validation Data



Flow cytometry: 1×10^6 Daudi cells (negative control, left) and U-138MG cells (right) were surface-stained with PE Rabbit anti-Human MRC2 mAb (A26561, 5 μ l/Test, orange line) or PE Rabbit IgG isotype control (A24172, 5 μ l/Test, blue line). Non-fluorescently stained cells were used as blank control (red line).

Flow cytometry: 1×10^6 U-138MG cells were surface-stained with PE Rabbit IgG isotype control (A24172, 5 μ l/Test, left) or PE Rabbit anti-Human MRC2 mAb (A26561, 5 μ l/Test, right).