

PE Rabbit anti-Human PU.1/SPI1 mAb

Catalog No.: A26564

Basic Information

Observed MW

Refer to figures

Calculated MW

31kDa

Category

Primary antibody

Applications

FC (intra)

Cross-Reactivity

Human

CloneNo number

ARC63111-PE

Conjugate

PE. Ex:565nm. Em:574nm.

Recommended Dilutions

FC (intra) 5 µl per 10⁶ cells in
100 µl volume

Background

This gene encodes an ETS-domain transcription factor that activates gene expression during myeloid and B-lymphoid cell development. The nuclear protein binds to a purine-rich sequence known as the PU-box found near the promoters of target genes, and regulates their expression in coordination with other transcription factors and cofactors. The protein can also regulate alternative splicing of target genes. Multiple transcript variants encoding different isoforms have been found for this gene.

Immunogen Information

Gene ID
6688

Swiss Prot
P17947

Immunogen

A synthetic peptide corresponding to a sequence within amino acids 1-100 of human PU.1/SPI1 (NP_003111.2)

Synonyms

OF; PU.1; AGM10; SFPI1; SPI-1; SPI-A

Contact

 | 400-999-6126

 | cn.market@abclonal.com.cn

 | www.abclonal.com.cn

Product Information

Source
Rabbit

Isotype
IgG

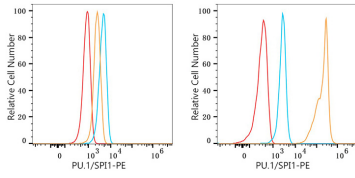
Purification
Affinity purification

Storage

Store at 2-8°C. Avoid freeze.

Buffer: PBS with 0.09% Sodium azide, 0.2% BSA, pH7.3.

Validation Data



Flow cytometry: 1×10^6 HAP1 cells (negative control, left) and THP-1 cells (right) were intracellularly-stained with PE Rabbit anti-Human PU.1/SPI1 mAb (A26564, 5 μ l/Test, orange line) or PE Rabbit IgG isotype control (A24172, 5 μ l/Test, blue line). Non-fluorescently stained cells were used as blank control (red line).