

ABflo® 610 Rabbit anti-Human CD80/B7-1 mAb

Catalog No.: A26573

Basic Information

Observed MW

Refer to figures

Calculated MW

18kDa/29kDa/33kDa

Category

Primary antibody

Applications

FC

Cross-Reactivity

Human

CloneNo number

ARC61136-ABflo610

Conjugate

ABflo® 610. Ex:421nm. Em:612nm.

Recommended Dilutions

FC 5 µl per 10⁶ cells in
100 µl volume

Background

The protein encoded by this gene is a membrane receptor that is activated by the binding of CD28 or CTLA-4. The activated protein induces T-cell proliferation and cytokine production. This protein can act as a receptor for adenovirus subgroup B and may play a role in lupus neuropathy.

Immunogen Information

Gene ID

941

Swiss Prot

P33681


Immunogen

Recombinant fusion protein containing a sequence corresponding to amino acids 35-242 of human CD80/B7-1 (NP_005182.1).

Synonyms

B7; BB1; B7-1; B7.1; LAB7; CD28LG; CD28LG1

Contact

 | 400-999-6126

 | cn.market@abclonal.com.cn

 | www.abclonal.com.cn

Product Information

Source

Rabbit

Isotype

IgG

Purification

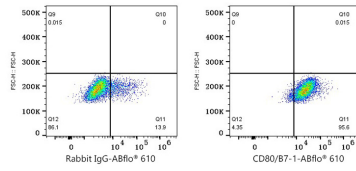
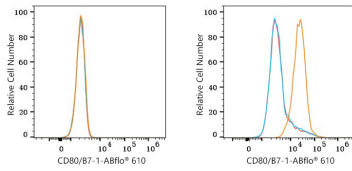
Affinity purification

Storage

Store at 2-8°C. Avoid freeze.

Buffer: PBS with 0.09% Sodium azide, 0.2% BSA, pH7.3.

Validation Data



Flow cytometry: 1×10^6 293F cells (negative control, left) and Raji cells (right) were surface-stained with ABflo® 610 Rabbit anti-Human CD80/B7-1 mAb (A26573, 5 $\mu\text{l}/\text{Test}$, orange line) or ABflo® 610 Rabbit IgG isotype control (A25826, 5 $\mu\text{l}/\text{Test}$, blue line). Non-fluorescently stained cells were used as blank control (red line).

Flow cytometry: 1×10^6 Raji cells were surface-stained with ABflo® 610 Rabbit IgG isotype control (A25826, 5 $\mu\text{l}/\text{Test}$, left) or ABflo® 610 Rabbit anti-Human CD80/B7-1 mAb (A26573, 5 $\mu\text{l}/\text{Test}$, right).